

# LOUIS GARNEAU



est. 1983



Summer **2021**









## LET'S HAVE A COFFEE TOGETHER!

We make stuff. We make products. Those products make memories. This is great but today, I am also launching coffee. I want to share with you my passion and my story. And like friends do, I want to have a coffee with you and have conversations that make a difference.

The year 2020 was rough for the world. After launching this company 37 years ago with my wife in my father's garage, Garneau started to experience financial problems in March 2020 only compounded by COVID-19. We were forced to layoff employees, make sacrifices to our normal routines, and reevaluate all aspects of our brands. This allows us to restructure and be ready for the future. This is where we are!

We believe in this future where bike is a positive way of life. More people are riding than ever before. So let's work together and find ways we can grow our businesses together. This is where we are going!

While we still have much to learn, what we know is that more than ever we need to listen. We want to understand your needs and your business, and once again prioritize our commitment to Independent Bike Dealers. With our 3 canadian brands: Garneau, Sugoi and Sombrio and a strong program, we, our reps, staff and myself, are looking forward to have a cup of coffee and catch up. See you soon!

Louis Garneau – President, Fonder



# Table of contents

- cycling** 06
- men cycling tops 12
- men cycling bottoms 18
- women cycling tops 25
- women cycling bottoms 29
- triathlon** 35
- men triathlon 40
- women triathlon 46
- goad** 52
- Junior** 56
- year-round riding essentials** 61
- Accessories** 71
- men base layers** 75
- chamois and fabrics 80
- clothing and accessories charts 88
- gloves** 90
- helmets** 100
- shoes** 120
- shoe covers** 138
- socks** 141
- bags** 143
- bike accessories** 151
- nutrition** 159
- eyewear** 160
- gloves/socks/shoes charts 162



# COFFEE LOUIS GARNEAU

## ARABICA COFFEE

Coffee (*Coffea Arabica*) as we know it mainly comes from two distinct varieties: Robusta and Arabica, the latter being widely recognized as the best and the most popular among coffee enthusiasts. The Arabica variety, originally stemming from Africa, is now mainly cultivated in South America (85% of the world coffee production, with 55% produced by Brazil and Colombia alone). Gourmet coffees are practically exclusively made of one variety of Arabica or another, like this coffee, a blend of grains from South and Central America.

\$1.00 will be donated to the DON'T TEXT AND DRIVE initiative for each product sold.



1098001 STD







## THE ENERGY SOLUTION

Sports nutrition is a passion of mine.

I currently make my own maple syrup and honey on my land in St-Augustin-de-Desmaures. I thought that these BIO products might pique your interest! I continue to develop new products every year.

Soon, I will surprise you with some delicious innovations!

Louis







Cycling







# Men cycling



86J  
1058001 Aero Suit p. 13



86J  
1042083 Aero Jersey p. 13



86J 1AX  
1010064 Vent Cap p. 13 and 74



61H 669 6H0  
1020759 Course Air Jersey p. 14



9US 9RA 210  
1820805 Equipe Pro Jersey p. 14



9QR 9PY 9PZ 9QS  
1042111 District Jersey p. 15



020 308 823 936 023  
1042105 Lemmon 3 Jersey p. 16



020 308 823 936 023  
1042107 Connection 2 Jersey p. 16



539 092 538 020  
1042081 HTO 3 Jersey p. 17



8E3 8E4 16I  
7820881 Mill Tee p. 17





020  
1058541 LGneer Bib p. 19



020  
1058321 Carbon Lazer Bib p.19



020  
1058315 Carbon 2 Bib p. 19



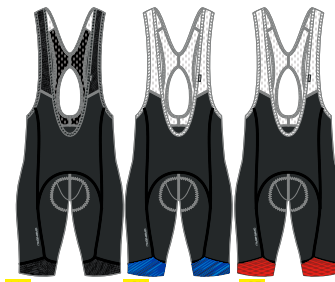
020 267  
1050511 Carbon 2 Shorts p. 20



252  
1058409 Neo Power Bib p. 20



020  
1050561 Neo Power Shorts p. 20



9GG 9PY 9PZ  
1858521 Neo Power Art Motion Bib p. 21



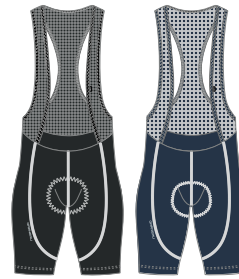
020 308  
1058413 Neo Power Motion Bib p. 21



8GI 9QR  
1850071 Neo Power Art Motion Shorts p.21



020 308  
1050611 Neo Power Motion Shorts p. 21



020 308  
1058579 Fit Sensor 3 Bib p. 22



020 308 944  
1050669 Fit Sensor 3 Shorts p. 22



020  
1058577 Fit Sensor Texture Bib p. 22



020  
1050671 Fit Sensor Texture Shorts p. 22



020 308  
1058539 Optimum 2 Bib p. 23



020 308  
1050025 Optimum 2 Shorts p. 23



020 944 092  
1054001 Leeway 2 Shorts p.23



020 944 534  
1054169 Range 2 Shorts p.24



020  
1058475 MTB Inner Mesh Bib p.24



020  
1054003 Cycling Inner Shorts p.24



# Women cycling



9VV

1020946 W's Stunner Jersey p.26



9QA

9QQ

9QC

9QB

1042112 W's District Jersey p. 26



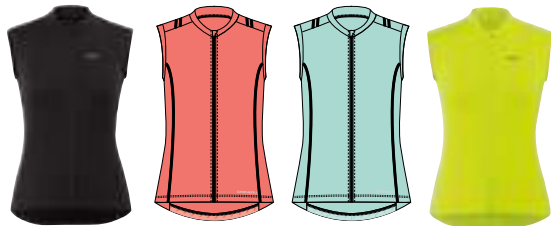
020

934

935

023

1042012 W's Beeze 3 Jersey p. 27



020

934

932

023

1042014 W's Beeze 3 Sleeveless p. 27



092

538

539

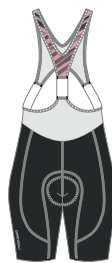
020

1042008 W's HTO 3 Jersey p. 28



020

1058004 W's LGneer Bib p. 29



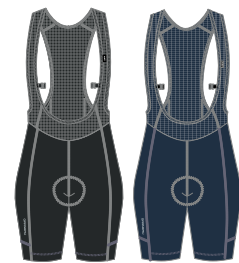
9VV

1058444 W's CB Carbon Lazer Bib p. 29



252

1058386 W's CB Neo Power Bib p. 30



020

020

1058574 W's Fit Sensor Texture Bib p. 33



1050514 W's CB Carbon 2 Shorts p. 30



1050568 W's CB Neo Power Shorts p. 31



1850076 W's Neo Power Art Motion Shorts p.31



90Q



90A



1050564 W's Neo Power Motion Shorts p. 32



1850616 W's Neo Power Art Motion 7 Shorts p. 32



1050032 W's Neo Power Motion 7 Shorts p. 32



1050594 W's Neo Power Motion 5.5 Shorts p. 32



1050002 W's Fit Sensor Texture 7.5 Shorts p. 33



1050008 W's Fit Sensor Texture 5.5 Shorts p. 33



1050010 W's Fit Sensor 7.5 Shorts 2 p. 34



1050012 W's Fit Sensor 5.5 Shorts 2 p. 34



1050024 W's Optimum 2 Shorts p. 34



1050596 W's Neo Power Airzone Knickers p. 35



1050648 W's Neo Power Knickers p. 35



1050656 W's Fit Sensor Texture Knickers p. 35



1050016 W's Optimum 2 Knickers p. 35



1054002 W's Latitude 2 Shorts p. 36



1054168 W's Radius 2 Shorts p. 36



1054004 W's Cycling Inner Shorts p. 36





**Men cycling tops**

## Aero Suit

1058001 / S-XXL

Through laboratory research, wind tunnel testing, real-world application and athlete feedback, we've challenged the status quo as we prepared for Tokyo 2020. We broke limits. We tested over 140 fabrics. We found the fastest. We prototyped dozens of body shaping techniques. We found the fastest. We engineered a new side panel culminating in the fastest fitting skinsuit, period. You want fast? You want to break limits? Say hi to the Aero Suit.

- **CB\* Mondo / CB\* Speed Tech / Speed Tech Striped / CB\* Gladiator / Avatar Mesh**

- Cooling effect treatment
- Aerodynamic and pre-shaped shoulders
- Short front zipper for cycling position
- Laser-style finished aero arms
- 2 floating back pockets
- Reflective trim and logos
- Inseam: 10.5"/26.5 cm



8GJ

## Aero Jersey

1042083 / S-3XL

- **CB\* Mondo / CB\* Speed Tech / Speed Tech Striped / Mesh Avatar**

- Cooling effect treatment
- Aerodynamic and pre-shaped shoulders
- Short front zipper for cycling position
- Laser-style finished aero arms
- 2 floating back pockets
- Reflective trim and logos

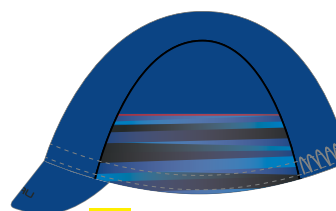


8GJ

## Vent Cap

1010064 / OS

- **Zircon / Microzone®**
- Elastic at back of head



8GJ



1AX



# Men cycling tops

## Course Air Jersey

★ 1020759 NEW / S-XXL

- **Carbon Ion / CB Pro Lycra**  
Carbon fiber that enhances blood circulation and procures antistatic properties
- Pre-shaped shoulder for optimum fit on bike
- Aero sleeves
- 3 angled back pockets
- Silicon grip at hem



6H0



61H



6G9

## Equipe Pro Jersey

1820805 / S-3XL

- **Diamond**
- Quick-drying
- Moisture management
- Light sensation
- Elastic hem
- 3 pockets at back
- 15"/38cm invisible zip



9US



210



9RA

## District Jersey

★ 1042111 NEW / S-XXL

- Light VentDry / Diamond Mesh
- Moisture management and light sensation
- Mesh at sleeves and side panels
- Laser-style finished aero arm bands with gripper
- Silicone gripper at hem
- Reflective trim at back pocket



9PZ



9PY



9QS



9QR



# Men cycling tops

## Lemmon 3 Jersey

★ 1042105 / S-XXL

- AirDry® / Highlander Mesh
- Quick-drying and moisture management
- Mesh at sides, armpits and under back pocket
- Textured fabric
- Silicone gripper at rear hem
- Reflective trim and logos



023



936



823



308



020

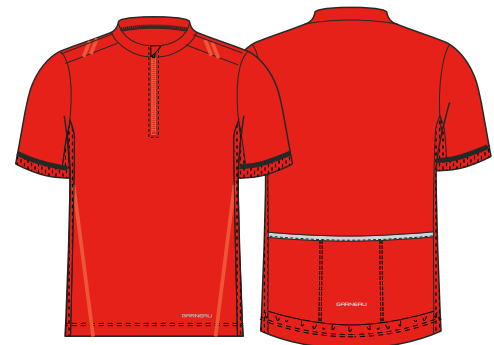
## Connection 2 Jersey

★ 1042107 / S-3XL

- AirDry® / Highlander Mesh
- Quick-drying and moisture management
- Mesh at sides and armpits
- Textured fabric
- Reflective trim and logos



023



936



823



308



020

## HTO 3 Jersey

★ 1042081 / S-3XL

- Zircon / AirFit Mesh
- Quick-drying and moisture management
- Comfort-designed neck that accommodates a full range of motion
- Mesh back panel
- 1 zippered pocket at side
- Reflective accents at front and back



539



092



538



020

## Mill Tee

★ 7820881 / S-XXL

- 65% polyester / 35% cotton
- 4-way stretchability



8E3



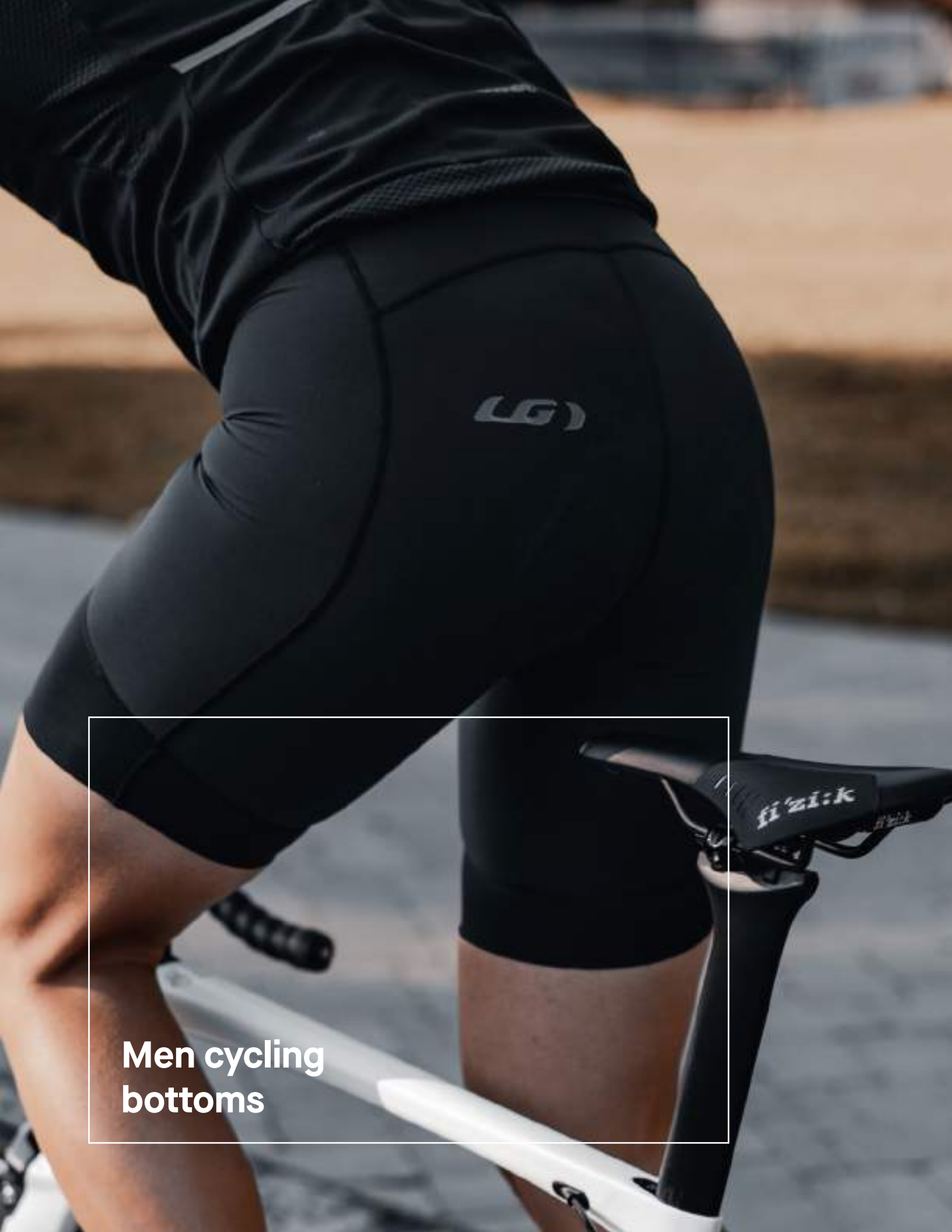
8E4



16I







SG

fizik

**Men cycling  
bottoms**

## LGneer Bib

1058541 / S-XXL

- LGneer (COOLMAX®) / Endurexx / Square Mesh
- Aerodynamic and compressive
- 3 different compression zones and weights
- Laser-style finish and integrated grip at thighs
- Inseam: 10.5"/26.5 cm



020

## CB Carbon Lazer Bib

1058321 / S-XXL

- CB\* Carbon + LYCRA® fiber / CB\* Lazer Rev / CB\* Gladiator / Carbon-X Mesh / Highlander Mesh
- Compressive and quick-drying
- Cooling effect treatment
- Antistatic properties
- Laser-style finish at thighs
- Inseam: 10.5"/26.5 cm



020

## CB Carbon 2 Bib

1058315 / S-XXL

- CB\* Carbon + LYCRA® fiber / Endurexx / Highlander Mesh / Carbon-X Mesh
- Compressive and quick-drying
- Cooling effect treatment
- Antistatic properties
- Ischial pressure relief zone
- Inseam: 9.25"/23.5 cm



020



# Men cycling bottoms

## CB Carbon 2 Shorts

1050511 / S-XXL

- **CB\* Carbon + LYCRA® fiber / Endurexx**
- Compressive and quick-drying
- Cooling effect treatment
- Antistatic properties
- Ischial pressure relief zone
- Inseam: 9.25"/23.5 cm



267



020



## CB Neo Power Bib

1058409 / S-XXL

- **CB\* Neo Power / Power Mesh**
- Compressive and quick-drying
- Cooling effect treatment
- Laser-style finish at thighs
- Reflective band at bottom
- Inseam: 10.5"/26.5 cm



252



## CB Neo Power Shorts

1050561 / S-XXL

- **CB\* Neo Power**
- Compressive and quick-drying
- Cooling effect treatment
- Laser-style finish at thighs
- Reflective band at bottom
- Inseam: 10.5"/26.5 cm



020



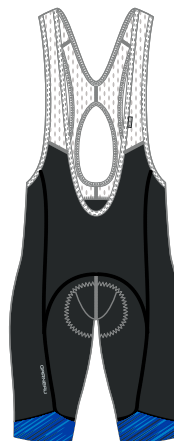
## Neo Power Art Motion Bib

1858521 / S-XXL

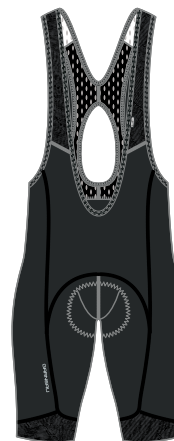
- Power + LYCRA® fiber / Pro + LYCRA® fiber / Power Mesh
- Compressive and quick-drying
- Laser-style finish at thighs
- Anti-chafing seams
- Inseam: 10.5"/26.5 cm



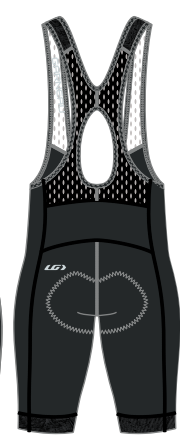
9PZ



9PY



8GG



## Neo Power Motion Bib

1058413 / S-XXL

- Power + LYCRA® fiber / Pro + LYCRA® fiber / Power Mesh
- Compressive and quick-drying
- Laser-style finish at thighs
- Anti-chafing seams
- Inseam: 10.5"/26.5 cm



308



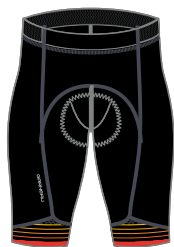
020



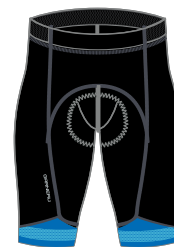
## Neo Power Art Motion Shorts

1850071 / S-XXL

- Power + LYCRA® fiber / Pro + LYCRA® fiber
- Compressive and quick-drying
- New comfort waistband
- Laser-style finish at thighs
- Anti-chafing seams
- Inseam: 10.5"/26.5 cm



9QR



8Gi



## Neo Power Motion Shorts

1050611 / S-XXL

- Power + LYCRA® fiber / Endurexx
- Compressive and quick-drying
- New comfort waistband
- Laser-style finish at thighs
- Anti-chafing seams
- Inseam: 10.5"/26.5 cm



308



020



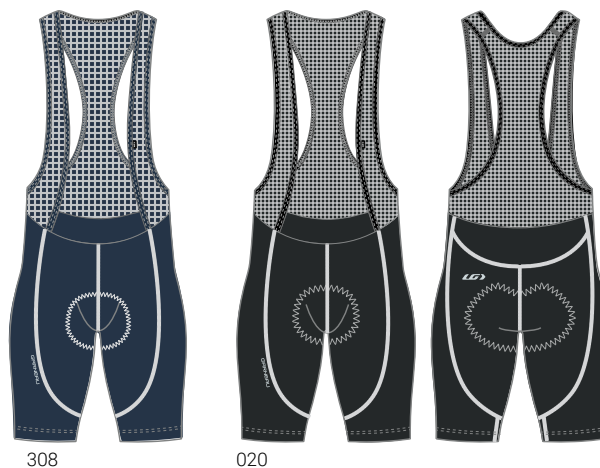


# Men cycling bottoms

## Fit Sensor 3 Bib

1058579 NEW / S-3XL

- Fit Sensor / Square Mesh
- Quick-drying and moisture management
- Comfortable straps with support at waist
- Soft gripper at legs
- Anti-chafing seams
- Reflective logos at front and back
- Inseam 10.25" / 26 cm



## Fit Sensor 3 Shorts

1050669 NEW / S-3XL

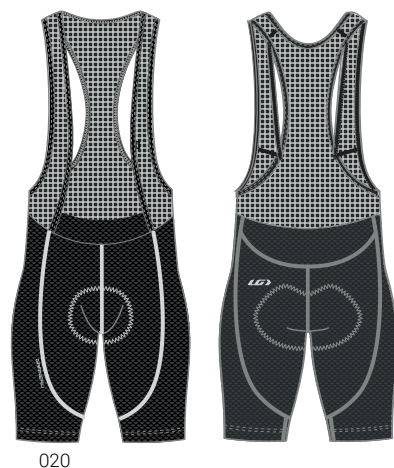
- Fit Sensor
- Quick-drying and moisture management
- Comfort waistband without pressure at front
- Soft gripper at legs
- Anti-chafing seams
- Reflective logos at front and back
- Inseam 9.25" / 23.5 cm



## Fit Sensor Texture Bib

1058577 NEW / S-3XL

- Fit Sensor Texture / Square Mesh
- Quick-drying and moisture management with a texturized look
- Comfortable straps with support at waist
- Soft gripper at legs
- Anti-chafing seams
- Reflective logos at front and back
- Inseam 10.25" / 26 cm



## Fit Sensor Texture Shorts

1050671 NEW / S-3XL

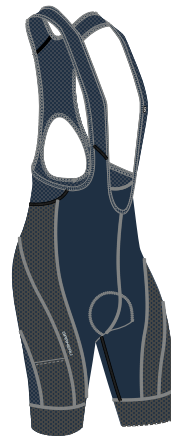
- Fit Sensor Texture
- Quick-drying and moisture management with a texturized look
- Comfort waistband without pressure at front
- Soft gripper at legs
- Anti-chafing seams
- Reflective logos at front and back
- Inseam 9.25" / 23.5 cm



## Optimum 2 Bib

★ 1058539 / S-XXL

- Signature Mat / Quantum 2 / Power Mesh
- Moisture management
- Gel pocket at thigh
- Powerband at thighs
- Reflective trim and logos
- Inseam: 9.25"/23.5 cm



308



020



## Optimum 2 Shorts

★ 1050025 / S-XXL

- Signature Mat / Quantum 2 / Power Mesh
- Moisture management
- Gel pocket at thigh
- Powerband at thighs
- Reflective trim and logos
- Inseam: 9.25"/23.5 cm



308



020



## Leeway 2 Shorts

★ 1054001 / S-XXL

- Rhino / Lightsens / Micro Mesh
- Adjustable waist with hooks and belt loops
- 2 zippered pockets at front
- Seamless inner leg
- Removable inner shorts with Powerband (snap loop system)
- Shorts' inseam: 12"/30.5 cm
- Inner shorts' inseam: 9.5"/24 cm



944



020



092



# Men cycling bottoms

## MTB Inner Mesh Bib

★ 1058475 / S-XXL

- Lightsens / Square Mesh
- Breathability and moisture management
- Antiodor treatment
- 2 pockets at sides and 2 at back
- Powerband
- Inseam: 10.5"/26.5 cm



AIRSPORT



020

## Cycling Inner Shorts

★ 1054003 / XS-XXL

- Lightsens
- Embossed elastic at waist
- Powerband at thighs
- Inseam: 9.5"/24 cm



AIRSPORT



020

## Range 2 Shorts

★ 1054169 / S-XXL

- Rhino / Brushed Knit
- Water, stain and abrasion resistant
- Sewn-in inner shorts with Powerband
- Reflective logo
- Inseam: 10"/25.5 cm



AIRSPORT



UPF/SPF PROTECTION



308

020

534





Women cycling tops

# Women cycling tops

## W's Stunner Jersey

1020946 / XS-XXL

- Zircon / Beverly / CB\* Mondo / Square Mesh
- Cooling effect treatment
- Moisture management and light sensation
- Aerodynamic and pre-shaped shoulders
- Laser-style finished aero arms
- Reflective dotted bands at sleeves and back pocket



9VV

## W's District Jersey

★ 1042112 NEW / XS-XXL

- Light VentDry / Diamond Mesh
- Moisture management and light sensation
- Mesh at sleeves and side panels
- Laser-style finished aero arm bands with gripper
- Silicone gripper at hem
- Reflective trim at back pocket



9QQ



9QC



9QA



9QB

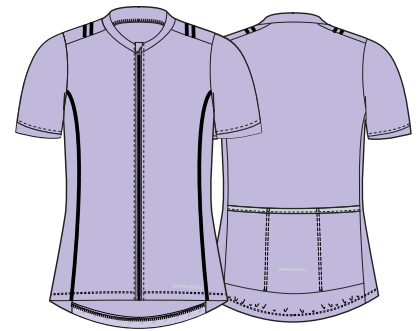
## W's Beeze 3 Jersey

★ 1042012 / XS-XXL

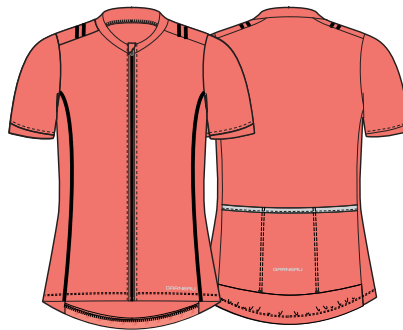
- AirDry®
- Quick-drying and moisture management
- Textured fabric
- Silicone gripper at rear hem
- Reflective trim and logos



023



935



934



020

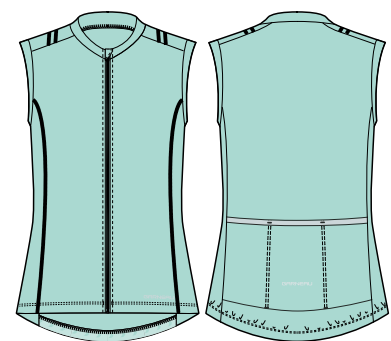
## W's Beeze 3 Sleeveless

★ 1042014 / XS-XXL

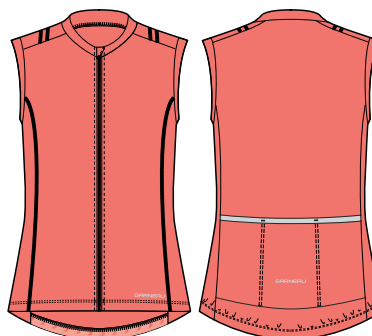
- AirDry®
- Quick-drying and moisture management
- Textured fabric
- Silicone gripper at rear hem
- Reflective trim and logos



023



932



934



020





## W's HTO 3 Jersey

★ 1042008 / XS-XXL

- Zircon / AirFit Mesh
- Quick-drying and moisture management
- Comfort-designed neck that accommodates a full range of motion
- Mesh back panel to accommodate hydration system
- 1 zippered pocket at side
- Reflective accents at front and back



538



092



539



020







**Women cycling bottoms**

# Women cycling bottoms

## W's LGneer Bib

1058004 / S-XXL

- LGneer (COOLMAX®) / Endurexx / Square Mesh
- Aerodynamic and compressive
- 3 different compression zones and weights
- Laser-style finish and integrated grip at thighs
- Reflective logos
- Inseam: 8"/20.5 cm

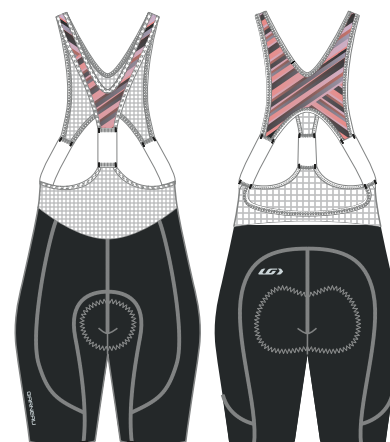


020

## W's CB Carbon Lazer Bib

1058444 / S-XXL

- CB\* Carbon + LYCRA® fiber / CB\* Lazer Rev / CB\* Gladiator / Square Mesh
- Quick-drying and compressive
- Antiodor treatment
- Cooling effect treatment
- Laser-style finish at thighs
- "Nature calls" friendly
- Inseam: 9.5"/24 cm



9VV

## W's CB Carbon 2 Shorts

1050514 / S-XXL

- CB\* Carbon + LYCRA® fiber / Endurexx
- Quick-drying and compressive
- Antiodor treatment
- Cooling effect treatment
- Laser-style finish at thighs
- HugFit V-shaped waist
- Inseam: 9.5"/24 cm



020



## W's CB Neo Power Bib

1058386 / S-XXL

- **CB\* Neo Power / Power Mesh**
- Quick-drying and compressive
- Cooling effect treatment
- Laser-style finish at thighs
- Detachable suspenders for pit stops
- Inseam: 8.5"/21.5 cm



252

## W's CB Neo Power Shorts

1050568 / S-XXL

- **CB\* Neo Power**
- Quick-drying and compressive
- Cooling effect treatment
- Laser-style finish at thighs
- Flattering HugFit waist
- Inseam: 9.5"/24 cm



020

## W's Neo Power Art Motion Shorts

1850076 / S-XXL

- **Power + LYCRA® fiber / Pro + LYCRA® fiber / Endurexx**
- Quick-drying and compressive
- Flattering HugFit waist
- Laser-style finish at thighs
- Reflective logos
- Inseam: 9.5"/24 cm



9QB



9QQ



9QA



# Women cycling bottoms

## W's Neo Power Motion Shorts / S-XXL 1050564

- Power + LYCRA® fiber / Pro + LYCRA® fiber / Beverly
- Quick-drying and compressive
- Textured fabric blend
- Flattering HugFit waist
- 1 pocket at side
- Laser-style finish at thighs
- Inseam: 9.5"/24 cm



308



020



## W's Neo Power Art Motion 7 Shorts 1850616 / S-XXL

- Pro + LYCRA® fiber / Beverly / Power Mesh
- Quick-drying and compressive
- Textured fabric blend
- Flattering HugFit waist
- Powerband at thighs
- Inseam: 7"/18 cm



9QC



8GG



## W's Neo Power Motion 7 Shorts 1050032 / S-XXL

- Pro + LYCRA® fiber / Beverly / Power Mesh
- Quick-drying and compressive
- Textured fabric blend
- Flattering HugFit waist
- 2 pockets at sides
- Powerband at thighs
- Inseam: 7"/18 cm



308



020



## W's Neo Power Motion 5.5 Shorts 1050594 / S-XXL

- Power + LYCRA® fiber / Power Mesh
- Quick-drying and compressive
- Flattering HugFit waist
- Powerband at thighs
- Inseam: 5.5"/14 cm



308



020



## W's Fit Sensor Texture Bib

1058574 NEW / S-XXL

- Fit Sensor Texture / Square Mesh
- Quick-drying and moisture management with a texturized look
- Women specific convertible straps
- Soft gripper at side of thighs
- Anti-chafing seams
- Reflective logos at front and back
- Inseam 8.25"/ 21 cm



308

020

## W's Fit Sensor Texture 7.5 Shorts

1050002 / S-XXL

- Fit Sensor Texture
- Quick-drying and moisture management
- Flattering HugFit waist
- Powerband at thighs
- 1 side pocket at thigh
- Inseam: 7.5"/19 cm



308

020

## W's Fit Sensor Texture 5.5 Shorts

1050008 / S-XXL

- Fit Sensor Texture
- Quick-drying and moisture management
- Flattering HugFit waist
- Powerband at thighs
- 1 side pocket at thigh
- Inseam: 5.5"/14 cm



308

020

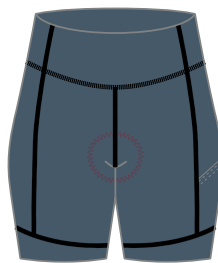


# Women cycling bottoms

## W's Fit Sensor 7.5 Shorts 2

1050010 / S-XXL

- **Fit Sensor**
- Quick-drying and moisture management
- Flattering HugFit waist
- Powerband at thighs
- 1 side pocket at thigh
- Inseam: 7.5"/19 cm



944



308



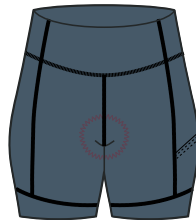
020



## W's Fit Sensor 5.5 Shorts 2

1050012 / S-XXL

- **Fit Sensor**
- Quick-drying and moisture management
- Flattering HugFit waist
- Powerband at thighs
- 1 side pocket at thigh
- Inseam: 5.5"/14 cm



944



308



020



## W's Optimum 2 Shorts

★1050024 / S-XXL

- **Quantum 2 / Signature Mat / Power Mesh**
- Moisture management
- Flattering HugFit waist
- Powerband at thighs
- 1 pocket at back
- Reflective trim and logos
- Inseam: 7"/18 cm



308



020



## W's Neo Power Airzone Knickers

1050596 / S-XXL

- Power + LYCRA® fiber / Endurexx / Power Mesh
- Compressive and quick-drying
- Mini-pocket at waist band
- Flattering HugFit waist
- Articulated knees and Powerband
- Inseam: 18"/45.5 cm



308

020

## W's Neo Power Knickers

1050648 / S-XXL

- Power + LYCRA® fiber / Power Mesh / Endurexx
- Compressive and quick-drying
- Mini-pocket at waist band
- Flattering HugFit waist
- Articulated knees and Powerband
- Inseam: 18"/45.5 cm



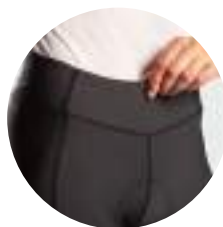
308

020

## W's Fit Sensor Texture ¾ Tights

★ 1050656 NEW / S-XXL

- Fit Sensor Texture
- Quick-drying and moisture management with a texturized look
- Flattering HugFit waist
- Anti-chafing seams
- Reflective logos at front and back
- Inseam 22" / 55 cm



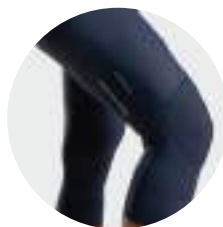
308

020

## W's Optimum 2 Knickers

★ 1050016 / S-XXL

- Quantum 2 / Signature Mat
- Moisture management
- Flattering HugFit waist
- Articulated knees and Powerband
- 1 pocket at back
- Reflective trim and logos
- Inseam: 18"/45.5 cm



308

020

# Women cycling bottoms

## W's Latitude 2 Shorts

★ 1054002 / XS-XXL

- Rhino / Lightsens / Square Mesh
- Adjustable waist with hooks and belt loops
- 2 zippered pockets at front
- Seamless inner leg
- Removable inner shorts with Powerband (snap loop system)
- Shorts' inseam: 12"/30.5 cm
- Inner shorts' inseam: 8"/20.5 cm



944



092



020

## W's Cycling Inner Shorts

★ 1054004 / XS-XXL

- Lightsens
- Flattering HugFit waist
- Embossed elastic at waist
- Powerband at thighs
- Inseam: 8"/20.5 cm



020

## W's Radius 2 Shorts

★ 1054168 / XS-XXL

- Rhino / ErgoFeel / Brushed Knit
- Water, stain and abrasion resistant
- Adjustable waist with drawstring
- Seamless inner leg
- Sewn-in inner shorts with Powerband
- Reflective logo
- Inseam: 11.5"/29 cm



308



020







**Triathlon**

# Men triathlon



1058525 Aero Tri Suit p. 41



1058527 Vent Tri Suit p. 42



1058529 Sprint Tri Suit p. 44



1042093 Aero Tri Jersey p. 41



1042097 Vent Tri Sleeveless p. 42



1042101 Sprint Tri Jersey p.44



1042095 Aero Tri Sleeveless p. 41



1042099 Vent Tri Sleeveless CF p. 42



1042103 Sprint Tri Sleeveless p. 45



1050083 Aero Tri Shorts p. 41



1050105 Vent Tri Shorts p. 43



1050125 Sprint triathlon Shorts p. 45



1050441 Tri Power Lazer p. 43

# Women triathlon



9VR  
1058420 W's Aero Tri Suit p. 47



9VS 9VT  
1058412 W's Vent Tri Suit p. 48



332 934  
1058422 W's Sprint Tri Suit p. 50



9VR  
1042076 W's Aero Tri Jersey p. 47



9VS 9VT  
1025196 W's Vent Tri Sleeveless p. 48



569 934 237  
1042080 W's Sprint Tri Jersey p. 50



9VR  
1042074 W's Aero Tri Sleeveless p. 47



9VS 9VT  
1025198 W's Vent Tri Sleeveless CF p. 48



569 934 237  
1042082 W's Sprint Tri Sleeveless p. 51



9VR  
1050204 W's Aero Tri Shorts p. 47



9VS 9VT 020  
1050644 W's Vent Tri 8 Shorts p. 49



020 934 237  
1042084 W's Sprint Tri Tank p. 51



020  
1050452 W's Tri Power Lazer p. 49



9VS 9VT  
1050260 W's Vent Tri 6 Shorts p. 49



020 308  
1050646 W's Sprint Tri Shorts p. 51





**Men triathlon**

# Men triathlon

## Aero Tri Suit

1058525 / XS-XXL

- **CB\* Mondo / CB\* Gladiator / CB\* Speed Tech / Speed Tech Striped / Highlander Mesh**
- Aerodynamic and hydrodynamic
- Chlorine-resistant and cooling effect treatment
- Pre-shaped shoulders
- 2 ice pockets at sides and 2 at inner legs
- 2 angled back pockets
- Laser-style finish at sleeves and thighs
- Reflective trim and logos
- Inseam: 10.5"/26.5 cm

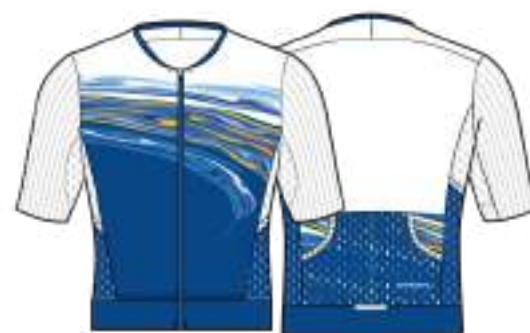


9VO

## Aero Tri Jersey

1042093 / XS-XXL

- **CB\* Mondo / CB\* Speed Tech / Speed Tech Striped / Highlander Mesh**
- Aerodynamic and hydrodynamic
- Chlorine-resistant and cooling effect treatment
- Pre-shaped shoulders
- Laser-style finish at sleeves
- 2 ice pockets at sides
- 2 angled back pockets
- Reflective trim and logos

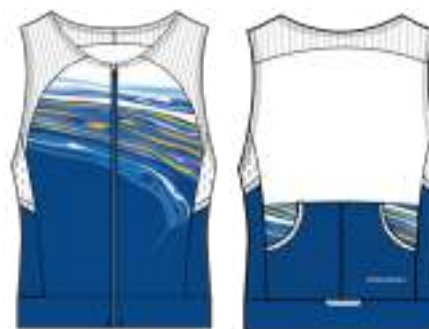


9VO

## Aero Tri Sleeveless

1042095 / XS-XXL

- **CB\* Mondo / CB\* Speed Tech / Speed Tech Striped / Highlander Mesh**
- Aerodynamic and hydrodynamic
- Chlorine-resistant and cooling effect treatment
- 2 ice pockets at sides
- 2 angled back pockets
- Reflective trim and logos



9VO

## Aero Tri Shorts

1050083 / XS-XXL

- **CB\* Gladiator / Highlander Mesh**
- Chlorine-resistant and cooling effect treatment
- 2 mesh ice pockets at inner legs
- Laser-style finish at thighs
- HiTop waist
- 2 angled back pockets
- Inseam: 10.5"/26.5 cm



9VO



# Men triathlon

## Vent Tri Suit

1058527 / S-XXL

- 3Edges / Highlander Mesh
- Chlorine-resistant
- Laser-style finish at armholes and thighs
- 2 ice pockets at sides
- 2 angled back pockets
- Reflective trim and logos
- Inseam: 9.5"/24 cm



9VP

9VQ

## Vent Tri Sleeveless

1042097 / S-XXL

- 3Edges / Highlander Mesh
- Chlorine-resistant
- Laser-style finish at armholes
- 2 ice pockets at sides
- 2 angled back pockets
- Reflective trim and logos



9VP

9VQ

## Vent Tri Sleeveless CF

1042099 / S-XXL

- 3Edges / Highlander Mesh
- Chlorine-resistant
- Laser-style finish at armholes
- 2 ice pockets at sides
- 2 angled back pockets
- Reflective trim and logos



9VP

9VQ



## Vent Tri Shorts

1050105 / S-XXL

- **3Edges / Highlander Mesh**
- Chlorine-resistant
- Laser-style finish at thighs
- Tri-comfort waist with drawstring
- 2 angled back pockets
- Reflective trim and logos
- Inseam: 9.5"/24 cm



9VP



020



9VQ

## Tri Power Lazer

1050441 / S-XXL

- **CB\* Power + LYCRA® fiber**
- Compressive and cooling effect treatment
- Aerodynamic and hydrodynamic
- Laser-style finish at thighs
- Tri-comfort waist with drawstring
- Inseam: 10"/25.5 cm



020

# Men triathlon

## Sprint Tri Suit

1058529 / S-XXL

- Endurexx / Highlander Mesh
- Quick-drying and moisture management
- Chlorine-resistant
- Gripper bands at thighs
- 2 angled back pockets
- Reflective trim and logos
- Inseam: 8"/20.5 cm



TRIAIR



STANDARD  
FIT



466



938

## Sprint Tri Jersey

1042101 / S-XXL

- Endurexx / Highlander Mesh
- Quick-drying and moisture management
- Chlorine-resistant
- Gripper band at hem
- 2 angled back pockets
- Reflective trim and logos



STANDARD  
FIT



332



938



461

## Sprint Tri Sleeveless

1042103 / S-XXL

- Endurexx / Highlander Mesh
- Quick-drying and moisture management
- Chlorine-resistant
- Gripper band at hem
- 2 angled back pockets
- Reflective trim and logos



466



938



461

## Sprint Tri Shorts

1050125 / S-XXL

- Endurexx / Highlander Mesh
- Tri-comfort waist with drawstring
- 2 angled back pockets
- Gripper bands at thighs
- Reflective trim and logos
- Inseam: 8"/20.5 cm



020



308





**Women triathlon**

# Women triathlon

## W's Aero Tri Suit

1058420 / XS-XXL

- **CB\* Mondo / CB\* Gladiator / CB\* Speed Tech / Speed Tech Striped / Highlander Mesh**
- Aerodynamic and hydrodynamic
- Chlorine-resistant and cooling effect treatment
- Pre-shaped shoulders
- 2 ice pockets at sides and 2 at inner legs
- 2 angled back pockets
- Laser-style finish at sleeves and thighs
- Reflective trim and logos
- Inseam: 9.5"/24 cm



9VR

## W's Aero Tri Jersey

1042076 / XS-XXL

- **CB\* Mondo / CB\* Speed Tech / Speed Tech Striped / Highlander Mesh**
- Aerodynamic and hydrodynamic
- Chlorine-resistant and cooling effect treatment
- Pre-shaped shoulders
- Laser-style finish at sleeves
- 2 ice pockets at sides
- 2 angled back pockets
- Reflective trim and logos



9VR

## W's Aero Tri Sleeveless

1042074 / XS-XXL

- **CB\* Mondo / CB\* Speed Tech / Speed Tech Striped / Highlander Mesh**
- Aerodynamic and hydrodynamic
- Chlorine-resistant and cooling effect treatment
- 2 ice pockets at sides
- 2 angled back pockets
- Reflective trim and logos



9VR

## W's Aero Tri Shorts

1050204 / XS-XXL

- **CB\* Gladiator / Highlander Mesh**
- Chlorine-resistant and cooling effect treatment
- 2 mesh ice pockets at inner legs
- Laser-style finish at thighs
- HugFit waist
- 2 angled back pockets
- Inseam: 9.5"/24 cm



9VR



# Women triathlon

## W's Vent Tri Suit

1058412 / XS-XXL

- **3Edges / Highlander Mesh**
- Chlorine-resistant
- Laser-style finish at shoulders and thighs
- 2 ice pockets at sides
- 2 angled back pockets with flap
- Reflective trim and logos
- Inseam: 8"/20.5 cm



9VT



9VS

## W's Vent Tri Sleeveless

1025196 / XS-XXL

- **3Edges / Highlander Mesh**
- Chlorine-resistant
- Laser-style finish at shoulders
- 2 ice pockets at sides
- 2 angled back pockets with flap
- Reflective trim and logos



9VT



9VS

## W's Vent Tri Sleeveless CF

1025198 / XS-XXL

- **3Edges / Highlander Mesh**
- Chlorine-resistant
- Laser-style finish at shoulders
- 2 ice pockets at sides
- 2 angled back pockets with flap
- Reflective trim and logos



9VT



9VS

## W's Vent 8 Tri Shorts

1050644 / XS-XXL

- **3Edges / Highlander Mesh**
- Chlorine-resistant
- Laser-style finish at thighs
- HugFit waist
- 2 angled back pockets
- Reflective trim and logos
- Inseam: 8"/20.5 cm



020



9VT



9VS

## W's Vent 6 Tri Shorts

1050260 / XS-XXL

- **3Edges / Highlander Mesh**
- Chlorine-resistant
- Laser-style finish at thighs
- HugFit waist
- 2 angled back pockets
- Reflective trim and logos
- Inseam: 6"/15 cm



9VT



9VS

## W's Tri Power Lazer

1050452 / S-XXL

- **CB\* Power + LYCRA® fiber**
- Compressive and cooling effect treatment
- Aerodynamic and hydrodynamic
- Laser-style finish at thighs
- Tri-comfort waist with drawstring
- Inseam: 9.75"/25 cm



020



# Women triathlon

## W's Sprint Tri Suit

1058422 / XS-XXL

- Endurexx / Highlander Mesh
- Quick-drying and moisture management
- Chlorine-resistant
- Mesh insert at chest to evacuate sweat
- Gripper bands at thighs
- 2 angled back pockets
- Reflective trim and logos
- Inseam: 7"/18 cm



934



332

## W's Sprint Tri Jersey

1042080 / XS-XXL

- Endurexx / Highlander Mesh
- Quick-drying and moisture management
- Chlorine-resistant
- Mesh insert at chest to evacuate sweat
- Gripper band at hem
- 2 angled back pockets
- Reflective trim and logos



569



237



934

## W's Sprint Tri Sleeveless

1042082 / XS-XXL

- Endurexx / Highlander Mesh
- Quick-drying and moisture management
- Chlorine-resistant
- Mesh insert at chest to evacuate sweat
- Gripper band at hem
- 2 angled back pockets
- Reflective trim and logos



237



934



569

## W's Sprint Tri Tank

1042084 / XS-XXL

- Endurexx / Highlander Mesh
- Quick-drying and moisture management
- Chlorine-resistant
- Mesh insert at chest to evacuate sweat
- Gripper band at hem
- 2 angled back pockets
- Reflective trim and logos



237



934



020

## W's Sprint Tri Shorts

1050646 / XS-XXL

- Endurexx / Highlander Mesh
- Tri-comfort waist with drawstring
- 2 angled back pockets
- Gripper bands at thighs
- Reflective trim and logos
- Inseam: 7"/18 cm



308



020







**Groad**



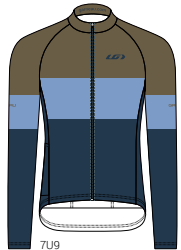
# Men groad



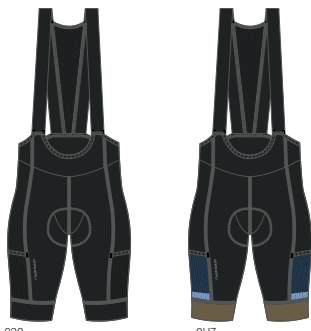
877  
1042163 Clutch Jersey p. 54



020 878  
1026203 Gritty T-shirt p. 54



7U9  
1023419 Rugged LS Jersey p. 54



020 9U7  
1058621 Corridge Bib p. 54

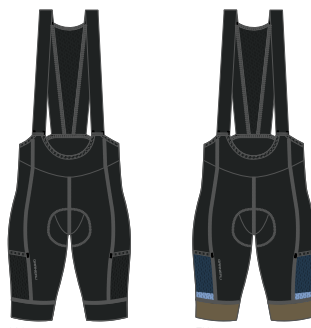
# Women groad



877  
1042156 W's Clutch Jersey p. 55



020 878  
1026206 W's Gritty T-shirt p. 55



020 7U9  
1058626 W's Corridge Bib p. 55



WOMEN

## TOP SHEET

- The top sheet contains carbon fibers and has high-tech bacteriostatic properties
- New breathable technical top sheet backing made with a mesh-like construction that opens and closes depending on the leg movement to draw moisture away from the body, leaving riders dry and fresh

## CONSTRUCTION

- The innovative 5.1 Pulse design combines 3D preshaped wings with skiving and vent perforation technologies
- Skiving technology is used to combine very dense and lightweight foams in order to optimize the ergonomic shape and lightness. Skiving provides more thickness where needed and thinness at the edges, making the pad unnoticeable when pedaling
- The deep slit at the back bridged by vented mesh allows for multidirectional motion and amazing comfort
- The mesh area at the front adapts to the body for increased comfort and moisture wicking
- Multi-thickness perforated high-density foam for better moisture evacuation and support
- Louis Garneau patented ergonomic shape
- Patents: U.S. #6,393,618 ; Can. #2,349,801
- Other international patents pending





# Men groad

## Clutch Jersey

★ 1042163 NEW / XS-3XL

- Light Vent-Dry
- Moisture management and light feeling
- 5 back pockets including 2 swivelling ones
- Silicone grip at hem
- Front and back reflective accents



877

## Gritty T-Shirt

★ 1026203 NEW / XS-3XL

- Light Vent-Dry
- Moisture management and light feeling
- Front and back reflective accents



020



878



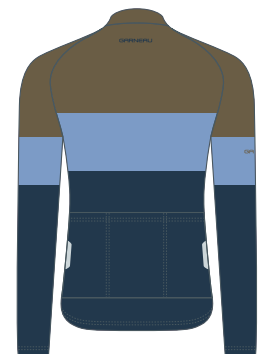
## Rugged LS Jersey

★ 1023419 NEW / XS-XXL

- Zircon / Extenz / Power Mesh
- Quick-drying and 4-way stretch
- Mud and water barrier at back pocket and lower back panel
- 3 rear pockets
- Hidden detachable bottle opener on cord
- Reflective trims



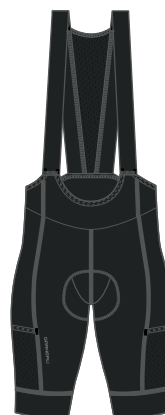
7U9



## Corridge Bib

★ 1058621 NEW / XS-3XL

- Endurexx / PowerMesh
- Moisture management and quick drying
- Light silicone inside straps and good waist support
- 2 wide pockets at thighs and 1 at back
- Inside silicon power band
- Anti-Chafing stitching
- Front and back reflective accents
- Inseam: 10.25" / 26 cm



020



7U9



# Women groad

## W's Clutch Jersey

★ 1042156 NEW / XS-XXL

- Light Vent-Dry
- Moisture management and light feeling
- 5 back pockets including 2 swivelling ones
- Silicone grip at hem
- Front and back reflective accents



877

## W's Gritty T-Shirt

★ 1026206 NEW / XS-XXL

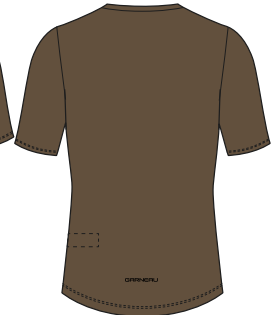
- Light Vent-Dry
- Moisture management and light feeling
- Front and back reflective accents



020



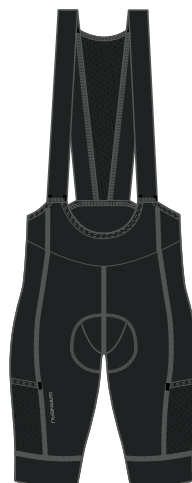
878



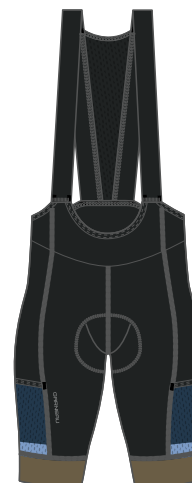
## W's Corridge Bib

★ 1058626 NEW / XS-XXL

- Endurexx / PowerMesh
- Moisture management and quick drying
- Light silicone inside straps and good waist support
- 2 wide pockets at thighs and 1 at back
- Inside silicon power band
- Anti-Chafing stitching
- Front and back reflective accents
- Inseam: 10.25" / 26 cm



020



7U9







**Junior**



# Junior



023 934 823  
1042056 Lemmon 2 Jr Jersey p. 58



538 539  
1042022 HTO Jr Jersey p. 60



020  
1050499 Boy's Request Promax Jr p. 58



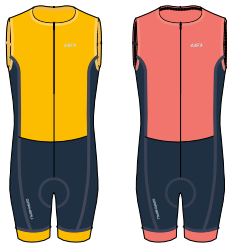
020 534  
1054193 Dirt 2 Jr Shorts p. 60



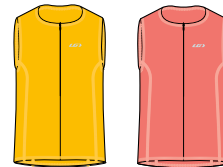
020  
1050497 Girl's Request Promax Jr p. 58



020 944  
1054199 Range 3 Jr Shorts p. 60



938 934  
1058359 Comp 2 Jr Suit p. 59



938 934  
1020879 Comp 2 Jr Sleeveless p. 59



020  
1050537 Comp 2 Jr Shorts p. 59

# Junior

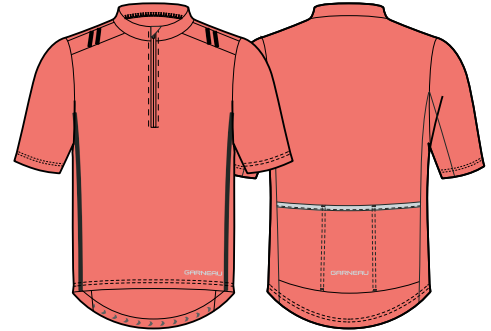
## Lemmon 2 Jr Jersey

★ 1042056 / JRXS-JRXL

- AirDry®
- Moisture management
- Textured fabric
- Silicone gripper at rear hem
- Reflective trim and logos at front and back



023



934



823

## Boy's Request Promax Jr

★ 1050499 / JRXS-JRXL

- Signature Mat
- Moisture management
- Elastic at waist
- Powerband
- Anti-chafing seams
- Reflective logos at front and back
- Inseam: 7"/18 cm



020

## Girl's Request Promax Jr

★ 1050497 / JRXS-JRXL

- Signature Mat
- Moisture management
- HugFit waist
- Powerband
- Anti-chafing seams
- Reflective logos at front and back
- Inseam: 7"/18 cm

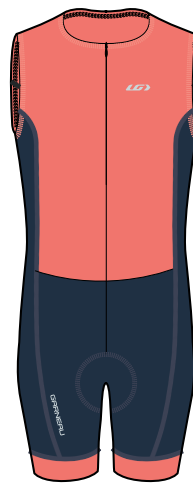


020

## Comp 2 Jr Suit

1058359 / JRXS-JRXL

- Endurexx
- Chlorine-resistant
- Ergonomic and hydrodynamic
- Powerband
- 1 pocket at back with headphone cable exit
- Inseam: 12"/30.5 cm



934



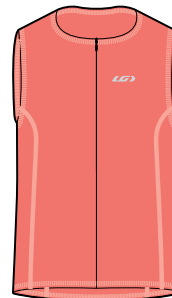
938



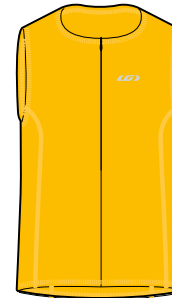
## Comp 2 Jr Sleeveless

1020879 / JRXS-JRXL

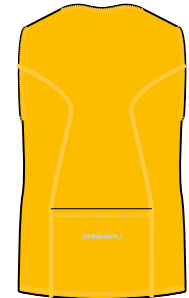
- Endurexx
- Chlorine-resistant
- Ergonomic and hydrodynamic
- Powerband
- 1 pocket at back with headphone cable exit



934



938



## Comp 2 Jr Shorts

1050537 / JRXS-JRXL

- Endurexx
- Quick-drying and moisture management
- Chlorine-resistant
- Ergonomic and hydrodynamic
- Powerband
- Inseam: 5"/12.5 cm



020



# Junior

## HTO Jr Jersey

1042022 / JRXS-JRXL

- Zircon
- Quick-drying and moisture management
- Comfort-designed neck
- Reflective accent



539



538



## Dirt 2 Jr Shorts

★ 1054193 / JRXS-JRXL

- TechFit / Lightsens / Square Mesh
- Detachable inner shorts with Powerband
- Snap loop system: compatible with LG inner shorts and inner bib
- 2 open pocket at sides
- Adjustable waist with hook-and-loop fastener
- Seamless inner leg
- Inseam: 8"/20.5 cm



534



020



## Range 3 Jr Shorts

★ 1054199 **NEW** / JRXS-JRXL

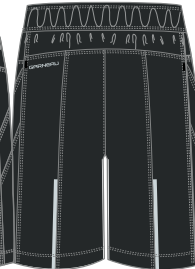
- Dura-X / Drytex 2002® / Lightsens
- Water, strain and abrasion resistant
- Adjustable waist with drawstring
- Sewn-in inner shorts with Powerband
- 2 open pockets at sides
- Inseam: 8"/20.5 cm



944



020





**All year round / Men**

# All year round / Men

## Sleet WP Jacket

★ 1030281 / S-XXL

- **FENCE 2L**
- Highly breathable waterproof and windproof membrane (20K/18K)
- Sealed seams and front flap
- Adjustable wrists with hook-and-loop fasteners
- Elastic gripper at hem
- 1 back pocket with flap



023



020

## Dualistic Jacket

★ 1030233 / S-XXL

- **Mistral / Vertexx**
- Wind-breaking, highly breathable softshell
- 2 front pockets located higher to access when wearing a waist bag
- 3 floating mesh pockets hidden at back for multi-use as a cycling and nordic skiing jacket
- Elastic thumb loops and articulated elbows
- Adjustable hem with gripper and drawstring
- Reflective logos at front and back



521



276



020



## Modesto Switch Jacket

★ 1030017 / S-XXL

- **Diamond Air 2.0 / AirFit Mesh**
- Light sensation and breathable
- Wind, water, stain and tear resistant
- Zip-off sleeves and shoulders convert jacket into a vest
- Laser-cut style holes at upper back for extra ventilation
- Reflective zipper at shoulder yoke
- 2 floating mesh pockets hidden at back



020



023

## Modesto 3 Jacket

★ 1030229 / S-XXL

- **Diamond Air 2.0 / AirFit Mesh**
- Light sensation and breathable
- Wind, water, stain and tear resistant
- Reflective dots at arms and back
- 1 zippered pocket at back with headphone cable exit
- Reflective logos at front and back



023

517

823

251

## Clean Imper Jacket

★ 1030107 / XXS-XXL

- **EVA / Micro Mesh**
- Eco-friendly: contains neither cadmium nor lead, unlike PVC
- Mesh side panels
- Hook-and-loop fastener
- Elastic at wrists
- Reflective trim at back



000

# All year round / Men

## Nova 2 Vest

★ 1028101 / S-XXL

- **Diamond Air 2.0 / AirFit Mesh**
- Light sensation and breathable
- Wind, water, stain and tear resistant
- Stretch reflective trim at armholes
- Reflective dots at back
- 1 zippered pocket at back with headphone cable exit
- Reflective logos at front and back



517



023



266



## Thermal Edge DWR Jersey

★ 1023407 / S-XXL

- **Drytex® Thermal Climate**
- Moisture management
- Heat retention
- Water and wind resistant
- Hard face, brushed back
- Full-length zip



517



823



020



## Edge 2 Jersey

★ 1023401 / S-XXL

- **Drytex® Thermal**
- Moisture management
- Heat retention
- Hard face, brushed back
- Thumb loops at wrists
- 2 zippered pockets at back, one with headphone cable exit



517



823



376



020



## Lemmon LS 2 Jersey

★ 1023001 / S-XXL

- **Thermasoft**
- Moisture management
- Moisture-wicking
- Comfortable wrist cuffs
- 3 back pockets
- Reflective elements at front and back



023



823



020



## Providence 2 Chamois Bib Tights

1069135 / S-XXL

- **Supra WindDry / HeatMaxx / Square Mesh**
- Wind, water, stain and abrasion resistant at front and upper back
- Brushed back and heat retention
- Articulated knees
- Signature ankle grippers
- Reflective logos and trim at front and back



MOTION airgel



020

## Solano Chamois Tights

1060241 / S-XXL

- **Supra WindDry / HeatMaxx / Endurexx**
- Laminated brushed softshell for element protection at front of legs and back of calves
- Brushed fabric at back for thermoregulation
- HiTop waist with drawstring
- Easy to retrieve ankle cuffs with ultra-stretchable triangle inserts
- Easy-access pocket at right thigh
- Reflective logos at front and back



AIRZONE2



020

## Optimum Mat 2 Tights

★ 1060005 / S-XXL

- **Signature Mat / Quantum 2 / Power Mesh**
- Quick-drying and moisture management
- Elastic waist with drawstring
- Mesh inserts behind articulated knees
- 1 pocket at thigh, 1 inner pocket at waist
- Reflective logos and trim at front and back



UPF/SPF PROTECTION



308

020

## Enduro 3 Bib Knickers

1058237 / S-XXL

- **HeatMaxx**
- Hard face, brushed back
- Heat retention
- Powerband at bottom legs
- Inseam: 19"/48.5 cm



AIRZONE2



020

*Inseam measured on a person wearing a medium-size garment.*





**All year round / Women**

## W's Sleet WP Jacket

★ 1030266 / S-XXL

- **FENCE 2L**
- Highly breathable waterproof and windproof membrane (20K/18K)
- Sealed seams and front flap
- Adjustable wrists with hook-and-loop fasteners
- Elastic gripper at hem
- 1 back pocket with flap



023



020

## W's Dualistic Jacket

★ 1030144 / XS-XXL

- **Mistral / Vertexx**
- Wind-breaking, highly breathable softshell
- 2 front pockets located higher to access when wearing a waist bag
- 3 floating mesh pockets hidden at back for multi-use as a cycling and nordic skiing jacket
- Elastic thumb loops and articulated elbows
- Adjustable hem with gripper and drawstring
- Reflective logos at front and back



525



521



020

# All year round / Women

## W's Modesto Switch Jacket

★ 1030016 / XS-XXL

- **Diamond Air 2.0 / AirFit Mesh**
- Light sensation and breathable
- Wind, water, stain and tear resistant
- Zip-off sleeves and shoulders convert jacket into a vest
- Laser-cut style holes at upper back for extra ventilation
- Reflective zipper at shoulder yoke
- 2 floating mesh pockets hidden at back



## W's Modesto 3 Jacket

★ 1030234 / XS-XXL

- **Diamond Air 2.0 / AirFit Mesh**
- Light sensation and breathable
- Wind, water, stain and tear resistant
- Reflective dots at arms and back
- 1 zippered pocket at back with headphone cable exit
- Reflective logos at front and back



## W's Nova 2 Vest

★ 1028102 / XS-XXL

- **Diamond Air 2.0 / AirFit Mesh**
- Light sensation and breathable
- Wind, water, stain and tear resistant
- Stretch reflective trim at armholes
- Reflective dots at back
- 1 zippered pocket at back with headphone cable exit
- Reflective logos and accents at front and back



## W's Thermal Edge DWR Jersey

★ 1023272 / XS-XXL

- Drytex® Thermal Climate
- Moisture management
- Heat retention
- Water and wind resistant
- Hard face, brushed back
- Full-length zip



396



020



## W's Edge 2 Jersey

★ 1023402 / XS-XXL

- Drytex® Thermal
- Moisture management
- Heat retention
- Hard face, brushed back
- Thumb loops at wrists
- 2 angled back pockets with headphone cable exit



396



090



376



## W's Beeze LS 2 Jersey

★ 1023002 / XS-XXL

- Therasoft
- Moisture management
- Moisture-wicking
- Comfortable wrist cuffs
- 3 back pockets
- Reflective elements at front and back



396



020





# All year round / Women

## W's Providence Chamois Bib Tights

1069132 / XS-XXL

- **Supra WindDry / HeatMaxx / Square Mesh**
- Wind, water, stain and abrasion resistant at front and upper back
- Brushed back and heat retention
- Articulated knees
- Signature ankle grippers
- "Nature calls" friendly
- Reflective logos and trim at front and back



020

## W's Solano Chamois Tights

1060240 / XS-XXL

- **Supra WindDry / HeatMaxx / Endurexx**
- Laminated brushed softshell for element protection at front of legs and back of calves
- Brushed fabric at back for thermoregulation
- HiTop waist with drawstring
- Easy to retrieve ankle cuffs with ultra-stretchable triangle inserts
- Easy-access pocket at right thigh
- Reflective logos at front and back



020

## W's Optimum Mat 2 Tights

★ 1060002 / XS-XXL

- **Signature Mat / Quantum 2 / Power Mesh**
- Quick-drying and moisture management
- Flattering HugFit waist
- Mesh inserts behind articulated knees
- 1 pocket at thigh, 1 inner pocket at waist
- Reflective logos and trim at front and back



308

020



**Accessories**

# Accessories

## Wind Pro® 2 Arm Warmers

1083158 / XS-XL

- Light Wind Pro®
- Windbreaking with DWR treatment
- Ergonomic fit
- Gripper at biceps
- Reflective elements



020

## Arm Warmers 2

★1083111 / XS-XL

- HeatMaxx
- Silicone gripper at biceps
- Anti-chafing seams
- Reflective logos



019



023



020

## Matrix 2.0 Arm Warmers

★1083132 / OS

- Matrix 2.0
- Multizone construction
- Seamless



020

## Arm Coolers

★1083109 / XS-XL

- Ictek
- Silicone gripper at biceps
- Reflective logos



019

## Don't Text and Drive Wristband

1P99093 / S/M - L/XL

- 2-pack



020



## H2-Cover

★1083138 / S/M - L/XL

- Polyurethane-coated Carbon WR spandex
- Water-resistant and sealed seams
- Stretch band
- Reflective logos



023



020

## Wind Pro® 2 Zip-Leg Warmers

1083160 / XS-XL

- **Light Wind Pro®**
- Windbreaking with DWR treatment
- Ergonomic fit
- Gripper at thighs
- 7"/18 cm ankle zips
- Reflective elements



020

## Leg Warmers 2

★ 1083113 / XS-XL

- **HeatMaxx**
- Silicone gripper at thighs
- Anti-chafing seams
- Reflective logos



023



020

## Zip-Leg Warmers 2

★ 1083114 / XS-XL

- **HeatMaxx**
- Silicone gripper at thighs
- 9"/23 cm ankle zips with reflective trim
- Anti-chafing seams and reflective logos



020

## Wind Pro® 2 Knee Warmers

1083159 / XS-XL

- **Light Wind Pro®**
- Windbreaking with DWR treatment
- Ergonomic fit
- Gripper at thighs
- Reflective elements



020

## Knee Warmers 2

★ 1083112 / XS-XL

- **HeatMaxx**
- Silicone gripper at thighs
- Anti-chafing seams
- Reflective logos



023



020



# Accessories

## Winter Cap

★ 1014069 / S/M - L/XL

- Vertex / Rib
- Warmth and protection
- Reflective trims



1AS

## Matrix 2.0 Hat

★ 1014437 / OS

- Matrix 2.0
- Multizone construction
- Unique seam



020

## Winter Skull Cap

★ 1014468 / S/M - L/XL

- Supra WindDry
- Perforated
- Ponytail opening
- Reflective logo



020

## Matrix 2.0 Neck Warmer

★ 1017190 / OS

- Matrix 2.0
- Multizone construction
- Unique seam



020

## Wind Headband

★ 1014469 / OS

- Supra WindDry
- Perforated
- Ponytail opening
- Reflective logo



020

## Matrix 2.0 Balaclava

★ 1014436 / OS

- Matrix 2.0
- Multizone construction
- Unique seam



020

## Hugo Band

1014438 / OS

- HeatMaxx
- Brushed back that retains heat
- Anti-chafing seams
- Reflective logo at front



396



159

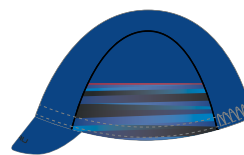


020

## Vent Cap

1010064 / OS

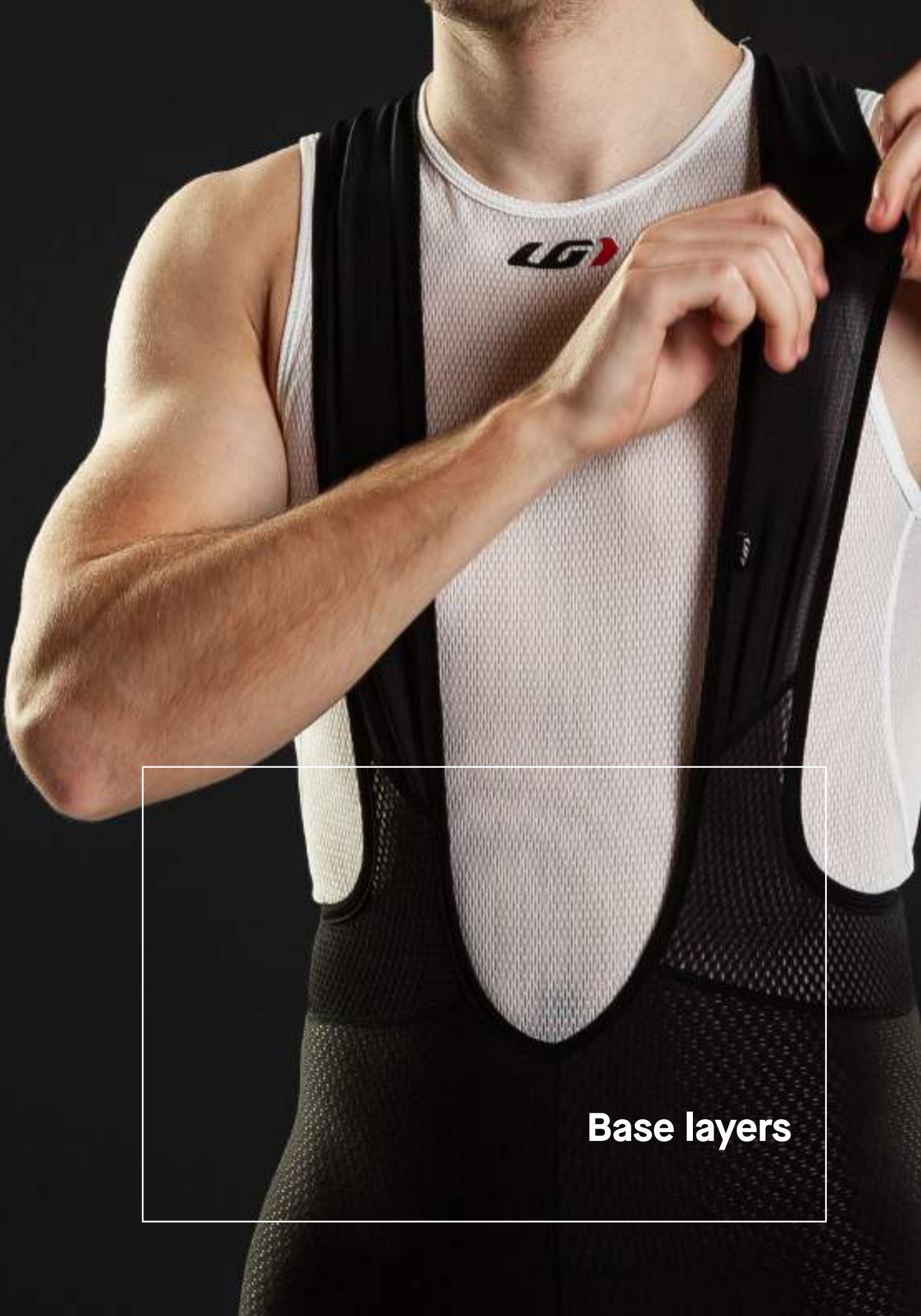
- Zircon / Microzone®
- Elastic at back of head



8GJ



1AX



**Base layers**

# men base layers

## 2004 LS Top

★ 1070253 / S-XXL

- **Drytex® 2004**
- Quick-drying and moisture management
- Antiodor treatment
- Anti-chafing seams
- 4-way stretchability
- Thumb loops at wrists
- Reflective logo at front



## 2004 Pants

★ 1075127 / S-XXL

- **Drytex® 2004**
- Quick-drying and moisture management
- Antiodor treatment
- Anti-chafing seams
- 4-way stretchability
- Elastic at waist
- Reflective logo at front



## Supra Windbreaker

★ 1070245 / S-XXL

- **Supra Filo /Extenz 3L**
- Airflow and moisture management
- Breathable and windbreaking at front
- Water and stain resistant
- 4-way stretchability
- Reflective logo at front



## 1001 Singlet / S-XXL

★ 1070210

- **Drytex® 1001**
- Lightweight
- Airflow and moisture management
- Quick-drying
- Anti-chafing seams
- 4-way stretchability
- Reflective logo at front



019

## MTB Inner Mesh Bib

★ 1058475 / S-XXL

- **Lightsens / Square Mesh**
- Breathability and moisture management
- Antiodor treatment
- 2 pockets at sides and 2 at back
- Powerband
- Inseam: 10.5"/26.5 cm



AIRSPORT



020

## Cycling Inner Shorts

★ 1054003 / XS-XXL

- **Lightsens**
- Embossed elastic at waist
- Powerband at thighs
- Inseam: 9.5"/24 cm



AIRSPORT





# women base layers

## W's 2004 LS Top

★ 1070254 / XS-XXL

- Drytex® 2004
- Quick-drying and moisture management
- Antiodor treatment
- Anti-chafing seams
- 4-way stretchability
- Thumb loops at wrists
- Reflective logo at front



## W's 2004 Pants

★ 1075126 / XS-XXL

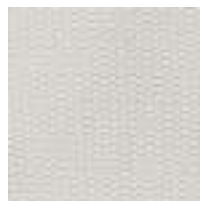
- Drytex® 2004
- Quick-drying and moisture management
- Antiodor treatment
- Anti-chafing seams
- Elastic at waist
- 4-way stretchability
- Reflective logo at front



## W's 1001 Singlet

★ 1070244 / S-XL

- Drytex® 1001
- Lightweight
- Airflow and moisture management
- Quick-drying
- Anti-chafing seams
- Reflective logo at front



## W's Cycling Inner Shorts

★ 1054004 / XS-XXL

- **Lightsens**
- Flattering HugFit waist
- Embossed elastic at back waist
- Powerband at thighs
- Inseam: 8"/20.5 cm



020

## W's Cycling Undies

★ 1054214 **NEW** / XS-XXL

- **Alternative Lightsens**
- Breathability and moisture management
- High rise
- Full back coverage
- Embossed elastic at waist



020



**Chamois:**

"I created seamless & articulated chamois with different thicknesses and an ergonomic shape to eliminate chaffing and accommodate pedaling.

The goal: comfort"

-Louis Garneau,  
Cyclist, Founder and President



**TOP SHEET**

- The top sheet contains carbon fibers and has high-tech bacteriostatic properties
- New breathable technical top sheet backing made with a mesh-like construction that opens and closes depending on the leg movement to draw moisture away from the body, leaving riders dry and fresh

**CONSTRUCTION**

- The innovative 5.1 Motion design combines 3D preshaped wings with skiving and vent perforation technologies
- Skiving technology is used to combine very dense and lightweight foams in order to optimize the ergonomic shape and lightness. Skiving provides more thickness where needed and thinness at the edges, making the pad unnoticeable when pedaling
- The deep slit at the back bridged by vented mesh allows for multidirectional motion and amazing comfort
- The mesh area at the front adapts to the body for increased comfort and moisture wicking
- Multi-thickness perforated high-density foam for better moisture evacuation and support
- Louis Garneau patented ergonomic shape
- Patents: U.S. #6,393,618 ; Can. #2,349,801
- Other international patents pending



**TOP SHEET**

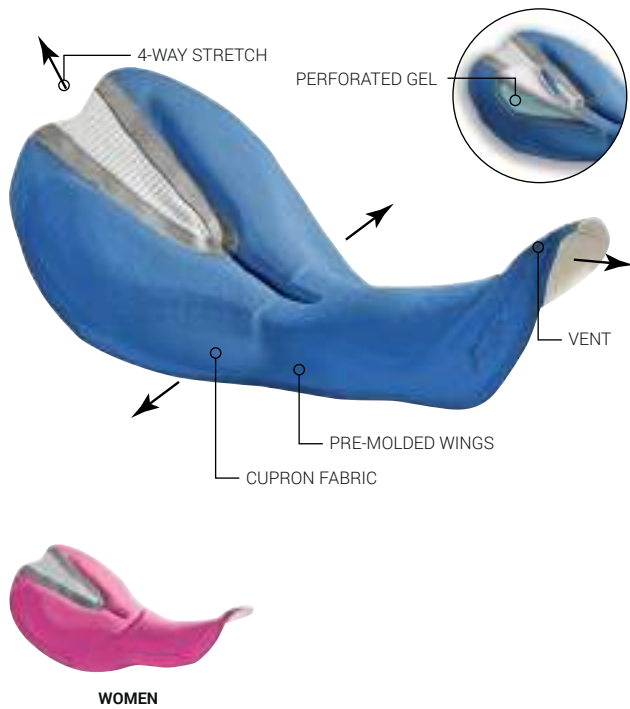
- Entirely made from recycled polyamide, spandex and eco-carbon fibers, this top sheet is certified according to the Global Recycle and SCS Recycled standards. The use of recycled fabric helps reduce CO<sub>2</sub> emissions by about 53% as well as cutting waste from raw material
- The top sheet contains carbon fibers that offer high-tech bacteriostatic properties. Our new top foams are 5 times more air permeable and 30% more breathable. These foams help reduce heat by letting air flow through freely

**CONSTRUCTION**

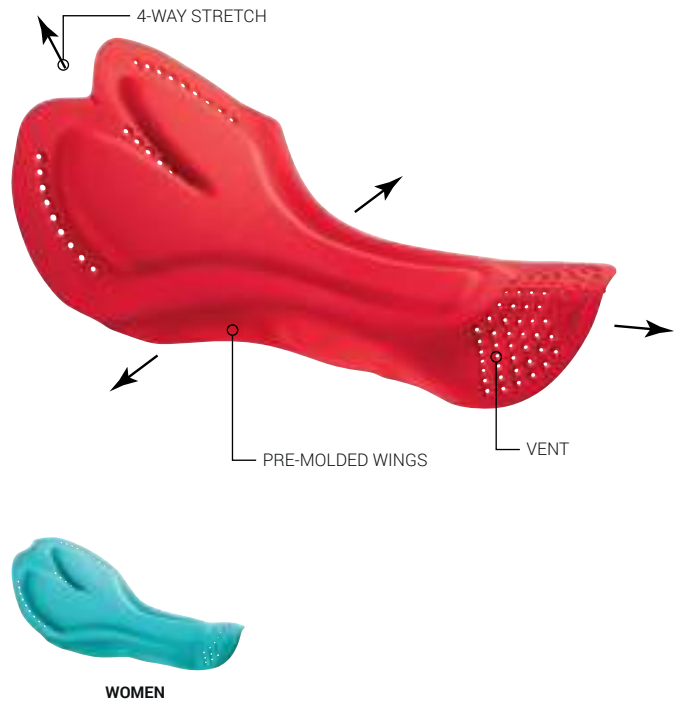
- The innovative 4.1 Motion design combines 3D preshaped wings and a deep slit at the back, bridged by vented mesh to allow for multidirectional motion and amazing comfort
- 4 additional mesh vents at the front for ventilation
- Multi-thickness perforated high-density foam for better moisture evacuation
- Progressive slope obtained by a molding technique merging 2 foams at a highest point of 10 mm gradually reducing to 1 mm on the edges, optimizing the ergonomic shape for improved comfort
- Louis Garneau patented ergonomic shape
- Patents: U.S. #6,393,618 ; Can. #2,349,801
- Other international patents pending



# MOTION *airgel*



# AIRZONE2



## TOP SHEET

- Made with CUPRON fabric: The copper content of CUPRON fabric helps reduce irritation to the skin, provides antimicrobial properties, can help promote wound healing and provides anti-allergen properties. Long-lasting effect throughout the life of the product

## CONSTRUCTION

- Perforated gel inserts offer comfort and breathability
- Multi-thickness perforated high-density foam for better moisture evacuation
- Vents at the front help maintain breathability
- Central channel shaped to relieve pressure from the urethra (men only)
- A deep slit at the back is bridged by vented mesh to allow for multidirectional motion and amazing comfort
- Developed with B.E.M. (Beveled Edge Molding) high-density perforated memory foam. This technology eliminates drastic drops of heights from one area to the other, resulting in a smooth transition without pinching points to eliminate chafing
- Louis Garneau patented ergonomic shape
- Patents : U.S. #6,393,618 ; Can. #2,349,801
- International patent pending

## TOP SHEET

- Fabric treated with an antibacterial solution to fight the effects of retained moisture, which can increase the growth of bacteria

## CONSTRUCTION

- Developed with B.E.M. (Beveled Edge Molding) high-density perforated memory foam. This technology eliminates drastic drops of heights at the edge of the foam, resulting in a smooth transition without pinching points or chafing
- Perforated vents maintain breathability without sacrificing comfort
- The foam and fabric used for this chamois maximize moisture wicking
- Chamois conforms ergonomically to the human body
- Pre-molded wings with a progressive slope shape for a superior, ergonomic fit
- 4-way stretch maximizes fit and motion
- Seamless construction
- Thinner perineal area relieves pressure (men only)
- Patents: U.S. #6,393,618 ; Can. #2,349,801



Beveled Edge Molding



High-density perforated memory foam and gel

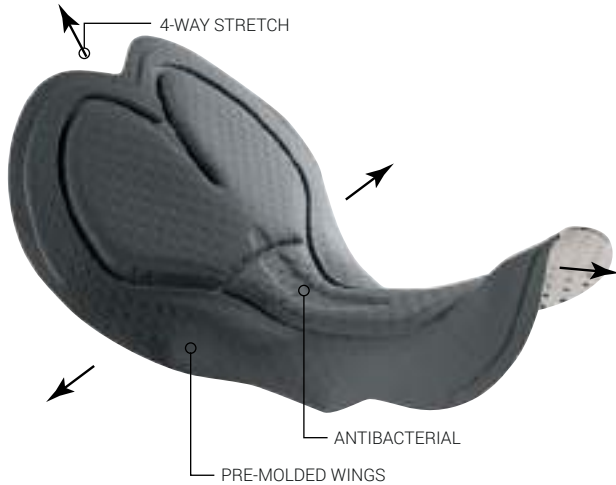


Beveled Edge Molding



High-density perforated memory foam





WOMEN



#### TOP SHEET

- Fabric treated with an antibacterial solution to fight the effects of retained moisture, which can increase the growth of bacteria

#### CONSTRUCTION

- Developed with B.E.M. (Beveled Edge Molding) high-density foam. This technology eliminates drastic drops of heights at the edge of the foam, resulting in a smooth transition, without pinching points or chafing
- The foam and fabric used for this chamois maximize moisture wicking
- Chamois conforms ergonomically to the human body
- Pre-molded wings for a superior, ergonomic fit
- 4-way stretch maximizes fit and motion
- Seamless construction
- Thinner perineal area relieves pressure (men only)
- Patents : U.S. #6,393,618 ; Can. #2,349,801

#### TOP SHEET

- Fabric treated with an antibacterial solution to fight the effects of retained moisture, which can increase the growth of bacteria

#### CONSTRUCTION

- Anatomic fit padding designed for the recreational cyclist in a minimalist shape that offers great comfort
- Minimal thickness for maximum versatility in fitness activities
- High-density foam for a good support
- 4-way stretch provides a better fit while riding
- Seamless construction eliminates pinching points and chafing



Beveled Edge Molding

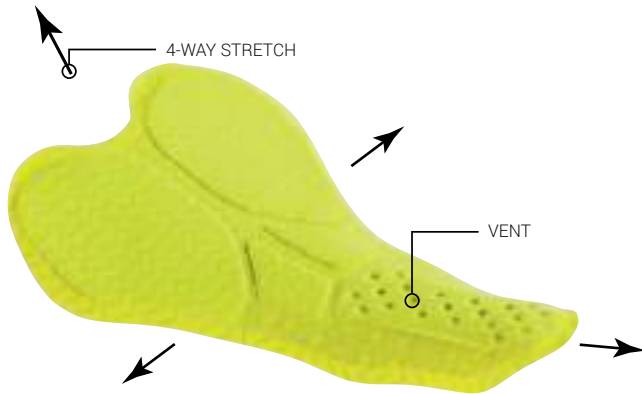


High-density foam



High-density perforated foam

# TRIAIR 2



## TOP SHEET

- The top sheet contains carbon fibers and offers high-tech bacteriostatic properties
- The new perforated top foam is breathable to reduce heat by letting air flow through freely

## CONSTRUCTION

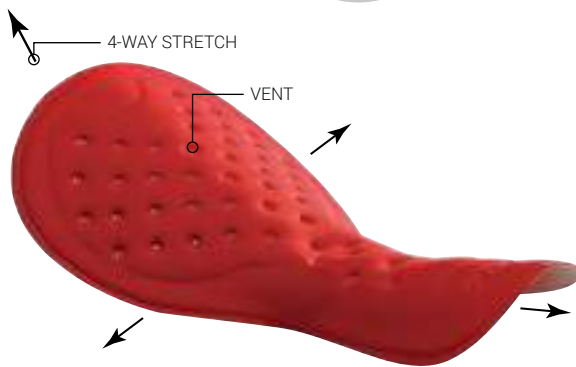
- Developed with a combination of strategically-located high density and lightweight foams
- The use of skiving technology ensures a smooth transition, making the pad unnoticeable when pedaling and running
- 4-way stretch to fit the different ranges of motion required in triathlon
- Lightweight, quick-drying and breathable chamois
- Provides great support during your bike ride while maintaining comfort during your run and swim
- Patents : U.S. #6,393,618 ; Can. #2,349,801



WOMEN



# TRIAIR



## TOP SHEET

- Fabric treated with an antibacterial solution to fight the effects of retained moisture, which can increase the growth of bacteria

## CONSTRUCTION

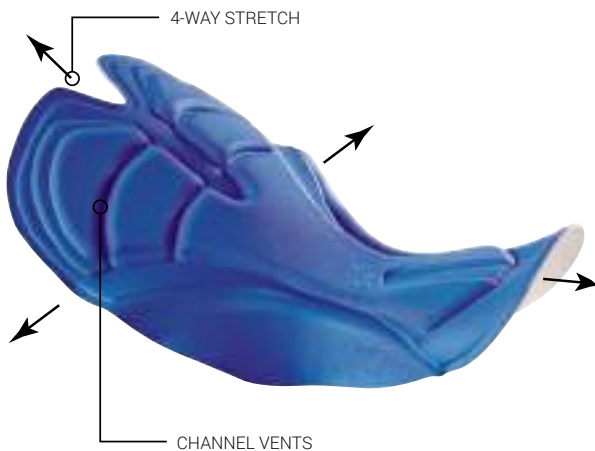
- Lightweight
- 4-way stretch to fit the different ranges of motion required in triathlon
- Quick-drying and breathable chamois
- Provides great support during your bike ride while maintaining comfort during your run and swim
- Patents : U.S. #6,393,618 ; Can. #2,349,801



WOMEN



# PRO-MAX FLEX



## TOP SHEET

- Fabric treated with an antibacterial solution to fight the effects of retained moisture, which can increase the growth of bacteria

## CONSTRUCTION

- 4-way stretch premolded padding provides a better fit while riding
- High-density foam for a better support
- Seamless construction eliminates pinching points and chafing
- Patents : U.S. #6,393,618 ; Can. #2,349,801



GIRL



## 3Edges

- Jacquard dimpled mesh structure that enhances ventilation and breathability
- Its high-denier spandex construction provides good muscle support and shape recovery
- Stable high-quality product that preserves its properties and color after being exposed to pool chlorine
- This fabric has a UPF/SPF 50
- 4-way stretch knit: 69% polyester, 31% spandex
- 195 g/m<sup>2</sup>, 5.8 oz/yd<sup>2</sup>
- Like all fabrics, it is recommended to avoid contact with abrasive materials and surfaces



- Construction improving aerodynamics for speeds ranging from 25 to 70 km/h (15 to 45 mph)
- Wicks moisture thanks to its hydrophilic properties and abrasion resistance
- Its dimpled mesh construction allows optimum airflow and great comfort
- The beneficial effects of this certified compressive fabric are the result of an efficient combination of fabric construction and spandex content
- This fabric has a UPF/SPF 50
- Stretch knit: 81% nylon, 19% spandex
- 200 g/m<sup>2</sup>, 5.9 oz/yd<sup>2</sup>
- Like all fabrics, it is recommended to avoid contact with abrasive materials and surfaces

## AirDry®

- Jacquard honeycomb construction that generates air circulation and moisture wicking
- The addition of a durable treatment gives this fabric antibacterial properties
- This fabric has a UPF/SPF 30
- 2-way mechanical stretch knit: 100% polyester
- 140 g/m<sup>2</sup>, 4.1 oz/yd<sup>2</sup>
- Like all fabrics, it is recommended to avoid contact with abrasive materials and surfaces

© Louis Garneau

## AIRFIT 2.0

- The natural look and soft feel of cotton with all the technical properties of polyester
- This fabric has a UPF/SPF 50
- 4-way stretch knit: 94% polyester, 6% spandex
- 180 g/m<sup>2</sup>, 5.3 oz/yd<sup>2</sup>
- Like all fabrics, it is recommended to avoid contact with abrasive materials and surfaces

## AIRFIT MESH

- The semi-opaque structure and lightness of the mesh provide comfort, flexibility and excellent moisture control
- 4-way stretch light knit: 95% polyester, 5% spandex
- 110 g/m<sup>2</sup>, 3.2 oz/yd<sup>2</sup>
- Like all fabrics, it is recommended to avoid contact with abrasive materials and surfaces

## INFORM MESH

- Highly resistant
- The semi-opaque mesh structure provides comfort and excellent moisture control
- Mechanical stretch knit: 100% polyester
- 130 g/m<sup>2</sup>, 3.8 oz/yd<sup>2</sup>
- Like all fabrics, it is recommended to avoid contact with abrasive materials and surfaces

## Avatar Mesh

- Designed for pros, this lightweight mesh increases airflow and provides great moisture management properties
- 4-way stretch light knit: 92% polyester, 8% spandex
- 95 g/m<sup>2</sup>, 2.6 oz/yd<sup>2</sup>
- Like all fabrics, it is recommended to avoid contact with abrasive materials and surfaces



- Protects the body from the absorption of acid smog and static energy due to the antistatic properties of the carbon fiber
- Compressive properties and unique support maximize muscular performance
- Helps favor blood circulation in the muscles which, during long rides, allows better performance and increases resistance to fatigue
- Opaque mesh construction provides good ventilation when stretched
- Incomparable comfort and recovery, reduced chafing - Made of LYCRA® SPORT ENERGY fabric
- DWR (Durable Water Repellent) treatment absorbs less water
- This fabric has a UPF/SPF 50
- 4-way stretch knit: 80% micro-polyester, 15% LYCRA® fiber - Powered by LYCRA® SPORT ENERGY fabric, 5% carbon
- 211 g/m<sup>2</sup>, 6 oz/yd<sup>2</sup>
- Like all fabrics, it is recommended to avoid contact with abrasive materials and surfaces



- The coldblack® finish allows heat to be reflected, unlike common dark textiles which absorb heat, thus preventing the user from overheating during physical activity
- Protects the body from the absorption of acid smog and static energy due to the antistatic properties of the carbon fiber
- Contributes to enhancing blood circulation thus improving cell oxygenation
- Breathable fabric accelerates moisture transfer and helps maintain body temperature
- On the outside, the combination of carbon fiber and nylon/LYCRA® fiber blend creates a texturized outer surface for better temperature management (cool when hot and hot when cool)
- High nylon content provides better resistance to abrasion
- 4-way stretch knit: 70% nylon, 24% LYCRA® fiber - Powered by LYCRA® SPORT ENERGY fabric, 6% carbon
- This fabric has a UPF/SPF 50
- 251 g/m<sup>2</sup>, 7.4 oz/yd<sup>2</sup>



- The coldblack® finish allows heat to be reflected, unlike common dark textiles which absorb heat, thus preventing the user from overheating during physical activity
- Stretchable fabric with the unique ability to expand and recover its shape like no other fiber
- Compressive properties maximize muscular performance
- Opaque construction blocks sun rays
- This fabric has a UPF/SPF 50
- 4-way stretch knit: 80% polyester, 20% spandex
- 240 g/m<sup>2</sup>, 7 oz/yd<sup>2</sup>
- Like all fabrics, it is recommended to avoid contact with abrasive materials and surfaces



CB laser rev



- The coldblack® finish allows heat to be reflected, unlike common dark textiles which absorb heat, thus preventing the user from overheating during physical activity
- This product contains more LYCRA® fiber than basic fabrics for better fit and shape retention
- Compressive properties maximize muscular performance
- Its special construction is developed to never shred and forms the perfect fabric for an efficient, seamless supportive band that will maintain its compression quality with no risk of deterioration
- This fabric has a UPF/SPF 50
- 4-way stretch knit: 71% nylon, 29% XTRA LIFE LYCRA® fiber
- 195 g/m<sup>2</sup>, 5.8 oz/yd<sup>2</sup>
- Like all fabrics, it is recommended to avoid contact with abrasive materials and surfaces



CB M2

- The coldblack® finish allows heat to be reflected, unlike common dark textiles which absorb heat, thus preventing the user from overheating during physical activity
- Ultra texturized construction allowing a better laminar airflow, which reduces the cyclist's drag factor and improves aerodynamics
- Wicks moisture thanks to its hydrophilic properties and abrasion resistance
- Its brick-like construction provides optimal airflow and exceptional comfort
- The beneficial effects of this compressive fabric are the result of an efficient combination of construction and the concentration of LYCRA® fiber
- This fabric has a UPF/SPF 50
- 4-way stretch knit: 79% nylon, 21% LYCRA® fiber - Powered by LYCRA® SPORT ENERGY
- 220 g/m<sup>2</sup>, 6.5 oz/yd<sup>2</sup>



CB MONDO

- The coldblack® finish allows heat to be reflected, unlike common dark textiles which absorb heat, thus preventing the user from overheating during physical activity
- Stretchable fabric with the unique ability to stretch and recover its shape like no other fiber
- Because of its multi-filament polyester construction, this material is known for its softness and comfort
- This fabric has a UPF/SPF 50
- 4-way stretch light knit: 86% micro-polyester, 14% spandex
- 130 g/m<sup>2</sup>, 3.8 oz/yd<sup>2</sup>
- Like all fabrics, it is recommended to avoid contact with abrasive materials and surfaces



CB SPEED TECH

- The coldblack® finish allows heat to be reflected, unlike common dark textiles which absorb heat, thus preventing the user from overheating during physical activity
- Construction improving aerodynamics for speeds ranging from 25 to 70 km/h (15 to 45 mph)
- Wicks moisture thanks to its hydrophilic properties
- Its dimpled mesh construction allows ventilation and comfort
- The beneficial effects of this certified compressive fabric are the result of an efficient combination of fabric construction and spandex content
- This fabric has a UPF/SPF 50
- 4-way stretch knit: 82% polyester, 18% spandex
- 195 g/m<sup>2</sup>, 5.75 oz/yd<sup>2</sup>
- Like all fabrics, it is recommended to avoid contact with abrasive materials and surfaces

## Cooling Engineer

- Technical knit engineered to optimise body ventilation where needed without compromising sun protection
- The use of CoolDry fiber repels moisture more quickly and keeps the body dry and comfortable
- Its Creora Fresh treatment acts as a permanent anti-odour
- 4-way stretch knit: 89% CoolDry polyester, 11% spandex
- 142 g/m<sup>2</sup>, 4.18 oz/yard<sup>2</sup>

### DIAMOND

- Light fabric provides excellent airflow
- Crosswise diamond-shaped construction provides the fabric with good ventilation and moisture wicking properties
- Dries quickly
- 2-way mechanical stretch light knit: 60% matte polyester microfiber, 40% glossy polyester
- 120 g/m<sup>2</sup>, 3.5 oz/yard<sup>2</sup>
- Like all fabrics, it is recommended to avoid contact with abrasive materials and surfaces

## DIAMONDAIR 2.0

- Diamond-shaped 40-denier ripstop construction enhances tear resistance
- Light yet abrasion-resistant, breathable and windproof fabric
- DWR (Durable Water Repellent) finish protects from the elements
- Light weave: 100% polyester
- 85 g/m<sup>2</sup>, 2.5 oz/yard<sup>2</sup>

## DRYTEX® 1001

- Designed for pros, this lightweight base layer fabric is very efficient when worn directly on the skin
- Perforations create a layer of air that prevents the first and second layers from sticking together. This layer of air retains body heat and keeps you dry in warmer conditions
- Treatment that enhances moisture wicking for maximum comfort
- The use of microfiber enhances comfort on skin contact
- Very light 4-way stretch knit mesh: 95% polyester, 5% spandex
- 90 g/m<sup>2</sup>, 2.9 oz/yard<sup>2</sup>

© Louis Gameau

## DRYTEX® 2002

- Permanent NANO-SILVER technology offers antibacterial and antiodor properties
- Made of a hollow fiber construction, it is fast-drying, optimizes moisture evacuation and helps control body temperature
- 40-denier 4-way stretch knit: 92% polyester, 8% spandex
- 150 g/m<sup>2</sup>, 4.4 oz/yard<sup>2</sup>
- Like all fabrics, it is recommended to avoid contact with abrasive materials and surfaces

© Louis Gameau

## DRYTEX® 2004

- Lightweight knit with the natural look and feel of cotton and all the technical properties of polyester
- Odor-free properties enhanced by an antibacterial treatment
- 4-way stretch knit: 94% polyester, 6% spandex
- 180 g/m<sup>2</sup>, 5.3 oz/yard<sup>2</sup>
- Like all fabrics, it is recommended to avoid contact with abrasive materials and surfaces

## DRYTEX® THERMAL

- Stretch diamond terry jacquard
- Brushed inner face with a grid construction that provides airflow and thermoregulation
- Its wicking finish enhances moisture wicking for maximum comfort
- This fabric has a UPF/SPF 50
- 4-way mechanical stretch knit: 100% polyester
- 210 g/m<sup>2</sup>, 6.2 oz/yard<sup>2</sup>
- Like all fabrics, it is recommended to avoid contact with abrasive materials and surfaces

## DRYTEX® THERMAL climate

- Stretch diamond terry jacquard with DWR treatment for extra climate protection
- Brushed inner face with a grid construction that provides airflow and thermoregulation
- This fabric has a UPF/SPF 50
- 4-way stretch knit: 92% polyester, 8% spandex
- 210 g/m<sup>2</sup>, 6.2 oz/yard<sup>2</sup>
- Like all fabrics, it is recommended to avoid contact with abrasive materials and surface

## DuraX

- 70 x 500 denier ottoman
- The nylon content and construction offer high abrasion resistance
- The use of spandex allows great ease of movement
- 2-way stretch weave: 96% nylon, 4% spandex
- 180 g/m<sup>2</sup>, 5.3 oz/yard<sup>2</sup>

## ENDUREXX



- Stretch fabric that perfectly molds the curves of the body to provide maximum muscle compression and excellent support, thus helping reduce fatigue and increase resistance
- XTRA LIFE LYCRA® fiber resists chlorine and other pool chemicals 5-10 times longer than unprotected spandex, allowing garments to keep their shape
- Soft-to-the-touch texture for more comfort
- Product developed to perfectly meet all your training needs
- This fabric has a UPF/SPF 50
- 4-way stretch matte knit: 80% nylon, 20% XTRA LIFE LYCRA® fiber
- 190 g/m<sup>2</sup>, 5.6 oz/yard<sup>2</sup>
- Like all fabrics, it is recommended to avoid contact with abrasive materials and surfaces

## ERGOFEEL

- Its brushed back enhances moisture wicking and body heat thermoregulation.
- Stretchy knit: 95% polyester, 5% spandex
- 280 g/m<sup>2</sup>, 8.3 oz/sq yd
- Like all knits, it is recommended to avoid abrasive materials and surfaces.

## EVA

- Waterproof EVA resin membrane provides maximum protection from the elements
- Contains neither cadmium nor lead, unlike PVC, making its production and use more user- and eco-friendly
- Membrane: 100% ethylene vinyl acetate

## Extenz3L

- 3-ply fabric constructed by combining 30-denier and 20-denier knits to offer lightness and protection from the elements
- DWR (Durable Water Repellent) finish on fabric surface
- Made with a breathable polyurethane membrane that allows for moisture wicking and protection from the elements thanks to its waterproof and windproof properties
- Merging of two fabrics for greater stretchability
- Mechanical stretch knit: 100% polyester
- Membrane: 100% polyurethane
- 160 g/m<sup>2</sup>, 4.7 oz/yard<sup>2</sup>
- Very good impermeability: 10,000 mm
- Very good breathability: 10,000 g/m<sup>2</sup>/24 h

## FENCE2L

- Light 2-ply softshell with a woven mesh face construction that allows the membrane fully perform in terms of wind protection, breathability and waterprooones
- The use of a mechanical stretch woven face also provides abrasion resistance
- DWR (Durable Water Repellent) treatment on the fabric surface allows water to pearl
- Mechanical stretch weave: 100% polyester
- Membrane: 100% polyurethane
- 77 g/m<sup>2</sup>, 2.3 oz/yard<sup>2</sup>
- Very good impermeability: 20,000 mm
- Very good breathability: 25,000 g/m<sup>2</sup>/24 h

## FENCE3L

- 3-ply hard-shell 40-denier fine gauge allowing softness, lightness and great ease of movement to the fabric as well as an excellent protection from the elements
- DWR (Durable Water Repellent) treatment on the fabric surface allows water to pearl
- Mechanical stretch weave: 100% nylon
- Membrane: 100% polyurethane
- Knit backing: 100% polyester
- 120 g/m<sup>2</sup>, 3.5 oz/yard<sup>2</sup>
- Very good impermeability: 20,000 mm
- Very good breathability: 20,000 g/m<sup>2</sup>/24 h

## Fit Sensor



- Polyester back that enhances moisture wicking and body heat thermoregulation
- A double construction fabric maximizes the specific properties of each fiber used: nylon on the front to resist abrasion and polyester on the back to wick moisture. LYCRA® fiber adds comfort and muscle support
- This fabric has a UPF/SPF 50
- 4-way stretch knit: 60% nylon, 24% polyester, 16% LYCRA® fiber
- 220 g/m<sup>2</sup>, 6.5 oz/yard<sup>2</sup>
- Like all fabrics, it is recommended to avoid contact with abrasive materials and surfaces

## Fit Sensor<sub>Texture</sub>

NOUVEAU

MEN

- Stretchable fabric with a unique chevron construction that provides good muscle support and shape recovery support
- This fabric has a UPF/SPF 50
- 4-way stretch knit: 76% polyester, 24% spandex
- 200 g/m<sup>2</sup>, 5.8 oz/yard<sup>2</sup>
- Like all fabrics, it is recommended to avoid contact with abrasive materials and surfaces

## Fit Sensor<sub>Texture</sub>

WOMEN

- Stretchable fabric with a unique chevron construction that provides good muscle support and shape recovery support
- This fabric has a UPF/SPF 50
- 4-way stretch knit: 76% polyester, 24% spandex
- 200 g/m<sup>2</sup>, 5.8 oz/yard<sup>2</sup>
- Like all fabrics, it is recommended to avoid contact with abrasive materials and surfaces



## HEATMAXX

- Opaque construction with a brushed back to improve body heat retention
- This fabric has a UPF/SPF 50
- Improvement: Addition of a DRW (Durable Water Repellent) finish for improved protection from the elements\*
- 4-way stretch knit: 86% nylon, 14% spandex
- 250 g/m<sup>2</sup>, 7.4 oz/yd<sup>2</sup>
- Like all fabrics, it is recommended to avoid contact with abrasive materials and surfaces

\* Some finished goods may have a DWR finish. Please refer to style description.

## HIGHLANDER MESH

- Designed for maximum moisture vapor transfer (MVT), which helps prevent overheating from exercise by venting moisture vapor build-up
- 4-way stretch fabric with excellent moisture management allowing quick drying and great comfort
- 4-way stretch weave: 93% polyester, 7% LYCRA® fiber
- 195 g/m<sup>2</sup>, 5.75 oz/yd<sup>2</sup>



- The surface is treated with Icefil, a xylitol-based treatment that absorbs body heat and transforms sweat into a cooling agent
- Fine-gauged construction results in an opaque, ultra light fabric
- Excellent stretchability thanks to the use of spandex
- Very light and soft to increase comfort
- This fabric has a UPF/SPF 50
- 4-way stretch knit: 92% polyester, 8% spandex
- 144 g/m<sup>2</sup>, 4.2 oz/yd<sup>2</sup>
- Like all fabrics, it is recommended to avoid contact with abrasive materials and surfaces

## LGneer

- This 3-zone engineered fabric was developed to provide optimum compressive properties to maximize muscular performance
- Its mesh construction is strategically placed to allow optimum airflow and great comfort
- The beneficial effects of this compressive and moisture-wicking fabric are the result of an efficient combination of polyester COOLMAX® polyester yarn and spandex
- This fabric has a UPF/SPF 50
- 4-way stretch knit: 66% polyester COOLMAX® polyester, 34% LYCRA® fiber
- Zone 1: 310 g/m<sup>2</sup>, 9.14 oz/yd<sup>2</sup>
- Zone 2: 340 g/m<sup>2</sup>, 10 oz/yd<sup>2</sup>
- Zone 3: 370 g/m<sup>2</sup>, 10.9 oz/yd<sup>2</sup>
- Like all fabrics, it is recommended to avoid contact with abrasive materials and surfaces



- Made of small inner honeycombs to increase airflow and wick moisture
- This fabric has a UPF/SPF 30
- Mechanical stretch knit: 100% polyester microfiber
- 140 g/m<sup>2</sup>, 4.1 oz/yd<sup>2</sup>
- Like all fabrics, it is recommended to avoid contact with abrasive materials and surfaces

© Louis Garneau

## Lightsens

- Stretchable fabric with a polyester multi-filament construction contributing to its softness and comfort
- The use of spandex maintains good stretchability and shape recovery
- Very light 4-way stretch knit: 89% polyester, 11% spandex
- 130 g/m<sup>2</sup>, 3.8 oz/yd<sup>2</sup>

## Light VentDry

- Made of small inner honeycombs to increase airflow and wick moisture
- 92% polyester, 8% spandex
- Like all fabrics, it is recommended to avoid contact with abrasive materials and surfaces

## Light Wind Pro® POLARTEC®

- This fleece spans an incredibly wide range of conditions; it performs as both outerwear and insulation and offers exceptional durability
- Proprietary yarns and a very tight construction greatly reduce the effects of windchill
- Blocks the wind four times more than traditional fleece
- The Durable Water Repellent outer surface sheds rain and snow
- Brushed inner surface efficiently traps air and provides a high warmth-to-weight ratio
- Inner and outer surfaces are finished for maximum durability and pill-free performance. They retain their insulating ability and original appearance after repeated use and laundering
- Because it is not a laminate, Polartec® Wind Pro® is highly breathable, maintaining 85% of the breathability of traditional fleece to help prevent overheating
- This fabric has a UPF/SPF 50+
- 4-way stretch knit: 58% nylon, 27% polyester, 15% spandex
- 214 g/m<sup>2</sup>, 6.3 oz/yd<sup>2</sup>

## MATRIX 2.0

- Fabric specifically constructed with different knit zones to combine breathability with protection
- High-precision knitting allows a product both thin and very stretchable
- This fabric has a UPF/SPF 50
- 4-way stretch knit : 77% nylon, 13% polyester, 10% spandex
- Like all fabrics, it is recommended to avoid contact with abrasive materials and surfaces

## Mesh WB

- Designed for pros, this lightweight mesh increases airflow and provides great moisture management properties
- 4 way stretch light knit: 92% polyester, 8% spandex
- 95 g/m<sup>2</sup>, 2.6 oz/yd<sup>2</sup>
- Like all fabrics, it is recommended to avoid contact with abrasive materials and surfaces

## MICROMESH

- Extremely well-ventilated mesh knit that provides excellent ventilation and moisture wicking properties
- Knit: 100% polyester
- 70 g/m<sup>2</sup>, 2 oz/yd<sup>2</sup>
- Like all fabrics, it is recommended to avoid contact with abrasive materials and surfaces

## Misty Mesh

- Semi-opaque diamond jacquard mesh construction enhances ventilation without being highly see-through
- 4-way stretch knit: 94% polyester, 6% spandex
- 140 g/m<sup>2</sup>, 4.1 oz/yd<sup>2</sup>
- Like all fabrics, it is recommended to avoid contact with abrasive materials and surfaces

## Mistral

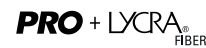
- Nylon spandex multi-function double weave softshell offering breathability, wind and abrasion resistance, quick drying and great ease of movement
- Non-fluorinated DWR (Durable Water Repellent) finish provides efficient protection from water
- 4-way stretch weave: 95% nylon, 5% spandex
- 287 g/m<sup>2</sup>, 8.5 oz/yd<sup>2</sup>



- This product contains more LYCRA® fiber than basic fabrics for full stretchability and shape recovery
- Compressive properties maximize muscular performance
- Helps favor blood circulation in the muscles which, during long rides, contributes to better performance and helps increase resistance to fatigue
- Absorbs and wicks moisture
- Power + LYCRA® fiber clothing is designed to fit muscle shape and provide maximum support to muscular fiber - Powered by LYCRA® SPORT ENERGY fabric
- This fabric has a UPF/SPF 50
- 4-way stretch knit: 80% nylon, 20% LYCRA® fiber - Powered by LYCRA® SPORT ENERGY fabric
- 267 g/m<sup>2</sup>, 7.9 oz/yd<sup>2</sup>
- Like all fabrics, it is recommended to avoid contact with abrasive materials and surfaces

## POWER MESH

- Opaque mesh construction provides extreme breathability
- Incomparable comfort and flexibility thanks to its spandex content that reduces chafing
- Dries very quickly
- 4-way stretch knit: 80% polyester, 20% spandex
- 177 g/m<sup>2</sup>, 5.2 oz/yd<sup>2</sup>
- Like all fabrics, it is recommended to avoid contact with abrasive materials and surfaces



- Stretchable fabric with the unique ability to expand and recover its shape like no other fiber
- This fabric has a UPF/SPF 50
- 4-way stretch knit: 75% polyester, 25% LYCRA® fiber - Powered by LYCRA® SPORT ENERGY fabric
- 237 g/m<sup>2</sup>, 7 oz/yd<sup>2</sup>
- Like all fabrics, it is recommended to avoid contact with abrasive materials and surfaces

## QUANTUM

- Embossed matte nylon spandex knit
- This fabric has a UPF/SPF 50
- 4-way stretch knit: 72% nylon, 28% spandex
- 230 g/m<sup>2</sup>, 6.8 oz/yd<sup>2</sup>
- Like all fabrics, it is recommended to avoid contact with abrasive materials and surfaces

## QUANTUM2

- Embossed matte nylon-spandex knit
- This fabric has a UPF/SPF 50
- 4-way stretch knit: 72% nylon, 28% spandex
- 230 g/m<sup>2</sup>, 6.8 oz/yd<sup>2</sup>
- Like all fabrics, it is recommended to avoid contact with abrasive materials and surfaces



- A 100-denier plain weave construction makes this fabric sturdy
- A DWR (Durable Water Repellent) treatment makes water pearl on the surface and increases resistance to stains
- This fabric has a UPF/SPF 50
- 2-way stretch weave: 94% polyester, 6% spandex
- 171 g/m<sup>2</sup>, 5.04 oz/yard<sup>2</sup>

## Signature MAT

- High performance spandex
- This fabric has a UPF/SPF 50
- 4-way stretch knit: 83% nylon, 17% spandex
- 220 g/m<sup>2</sup>, 6.5 oz/yard<sup>2</sup>
- Like all fabrics, it is recommended to avoid contact with abrasive materials and surfaces

## SILKEN Flex

- Flat, tight 55-denier plain weave construction
- The addition of spandex allows good ease of movement
- Light 4-way stretch weave: 86% polyester, 14% spandex
- 100 g/m<sup>2</sup>, 2.95 oz/yard<sup>2</sup>



- Construction improving aerodynamics for speeds ranging from 25 to 70 km/h (15 to 45 mph)
- Wicks moisture thanks to its hydrophilic properties
- Dimpled mesh construction allows ventilation and comfort
- The beneficial effects of this certified compressive fabric are the result of an efficient combination of fabric construction and LYCRA® fiber content
- This fabric has a UPF/SPF 50
- Stretch knit: 81% nylon, 19% LYCRA® fiber
- 180 g/m<sup>2</sup>, 5.3 oz/yard<sup>2</sup>
- Like all fabrics, it is recommended to avoid contact with abrasive materials and surfaces



- Linear channel construction that allows a better laminar airflow, which reduces the cyclist's drag factor and improves aerodynamics
- Linear dimpled mesh structure that provides optimal airflow and breathability
- The beneficial effects of this certified compressive fabric are the result of an efficient combination of fabric construction and LYCRA® fiber content
- This fabric has a UPF/SPF 50
- 4-way stretch knit: 80% nylon, 20% LYCRA® fiber
- 220 g/m<sup>2</sup>, 6.5 oz/yard<sup>2</sup>
- Like all fabrics, it is recommended to avoid contact with abrasive materials and surfaces

## Square Mesh

- Grid-like mesh that provides ventilation, stretchability and quick drying
- 4-way stretch knit: 91% polyester, 9% spandex
- 130 g/m<sup>2</sup>, 3.8 oz/yard<sup>2</sup>

## SUPER LITE Dry

- 2-ply fabric protects from the elements
- Made of a polyurethane membrane that enhances protection from the elements thanks to water-repellent and wind-breaking properties
- Mechanical stretch 2-ply laminated knit: 100% polyester
- Membrane: 100% polyurethane
- 115 g/m<sup>2</sup>, 3.4 oz/yard<sup>2</sup>
- Very good impermeability

## SUPRAFILE 02

- Perforated mesh construction increases airflow and provides great moisture management properties
- Very light and soft for greater comfort
- Spandex content provides stretchability for comfort and ease of movement
- Light 2-way stretch knit: 95% polyester, 5% spandex
- 100 g/m<sup>2</sup>, 2.9 oz/yard<sup>2</sup>
- Like all fabrics, it is recommended to avoid contact with abrasive materials and surfaces

## Supra WindDry

- 3-ply softshell resulting from a combination of two knits for optimal elasticity that improves fit and comfort
- Its micro-perforated polyurethane membrane enhances moisture evacuation and protection from the elements
- DWR (Durable Water Repellent) treatment on the fabric surface allows water to pearl
- 4-way stretch 3-ply knit: 83% polyester, 9% polyurethane, 8% spandex
- 323 g/m<sup>2</sup>, 9.5 oz/yard<sup>2</sup>
- Very good impermeability: 10,000 mm
- Very good breathability: 10,000 g/m<sup>2</sup>/24 h



- Its 40-denier ripstop construction enhances abrasion and tear resistance
- The use of a higher percentage of spandex provides excellent stretchability
- Water-repellent treatment causes water to pearl on the surface
- This fabric has a UPF/SPF 50
- 4-way stretch weave: 82% nylon, 18% spandex
- 180 g/m<sup>2</sup>, 5.3 oz/yard<sup>2</sup>

## THERMASOFT 180

- Brushed knit that covers a variety of climate conditions
- Its spandex content ensures freedom of movement
- A hydrophobic treatment allows moisture to evacuate rapidly
- The brushed interior efficiently retains air and offers a high warmth-to-weight ratio
- The fabric retains its insulating ability and original appearance after repeated use and laundering
- This fabric has a UPF/SPF 50
- 4-way stretch knit: 83% polyester, 17% spandex
- 180 g/m<sup>2</sup>, 5.3 oz/yard<sup>2</sup>
- Like all fabrics, it is recommended to avoid contact with abrasive materials and surfaces

## Unwind

- Light stretch weave with a high density 30-denier construction that offers windbreaking properties, breathability and comfort
- DWR (Durable Water Repellent) finish protects from the elements
- Light weave: 85% polyester, 15% spandex
- 70 g/m<sup>2</sup>, 2 oz/yard<sup>2</sup>

## Vector Skin

- Embossed fabric proven to increase aerodynamics yet offer great compression and moisture-wicking
- 4-way stretch knit: 85% polyester, 15% spandex
- 200 g/m<sup>2</sup>, 5.9 oz/yard<sup>2</sup>
- Like all fabrics, it is recommended to avoid contact with abrasive materials and surfaces

## VERTERX

- Opaque construction with a brushed back to improve body heat retention
- This fabric has a UPF/SPF 50
- Improvement: Addition of a DRW (Durable Water Repellent) finish for improved protection from the elements\*
- 4-way stretch knit: 90% polyester, 10% spandex
- 200 g/m<sup>2</sup>, 5.9 oz/yard<sup>2</sup>
- Like all fabrics, it is recommended to avoid contact with abrasive materials and surfaces

\* Some finished goods may have a DWR finish. Please refer to style description.

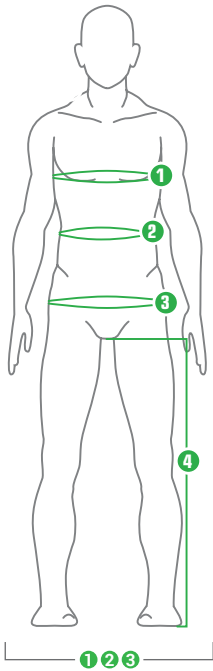
## X-LITE 19

- Extremely light and breathable windbreaking fabric specifically designed to be the lightest and smallest when compacted
- Its 10 by 10 denier ripstop construction optimizes its lightness and resistance to abrasion
- DWR (Durable Water Repellent) waxed finish protects from the elements
- Featherweight weave: 100% nylon
- 19 g/m<sup>2</sup>, 0.5 oz/yard<sup>2</sup>

## Zircon

- Interlock construction that provides good moisture-wicking properties
- This fabric has a UPF/SPF 50
- Mechanical stretch knit: 100% polyester
- 130 g/m<sup>2</sup>, 3.8 oz/yard<sup>2</sup>
- Like all fabrics, it is recommended to avoid contact with abrasive materials and surfaces

## MEN SIZE CHARTS



Measurements all around

### Slim Fit

	XS		S		M		L		XL		XXL		3XL	
	IN.	CM	IN.	CM	IN.	CM	IN.	CM	IN.	CM	IN.	CM	IN.	CM
1 CHEST MEASUREMENT	32-34	81-86	35-37	89-94	38-40	96-101	40-42	101-106	42-44	106-111	44-46	111-116	46-48	116-122
2 WAIST MEASUREMENT	28-30	71-76	30-32	76-81	32-34	81-86	34-36	86-91	36-38	91-96	38-40	96-101	40-42	101-106
3 HIPS MEASUREMENT	32-34	81-86	35-37	89-94	38-40	96-101	40-42	101-106	42-44	106-111	44-46	111-116	46-48	116-122
4 INSEAM	30	76	31	79	32	81	33	84	33	84	33	84	33	84



Close-fitting garment designed to provide aerodynamics in a cycling position. For a less compressive feel on the body, upsize.

### Standard Fit & Relaxed Fit

	XS		S		M		L		XL		XXL		3XL	
	IN.	CM	IN.	CM	IN.	CM	IN.	CM	IN.	CM	IN.	CM	IN.	CM
1 CHEST MEASUREMENT	32-34	81-86	35-37	89-94	38-40	96-101	41-43	104-109	44-46	111-116	47-49	119-124	50-52	127-132
2 WAIST MEASUREMENT	28-30	71-76	30-32	76-81	32-34	81-86	35-37	89-94	38-41	94-104	42-45	106-114	46-48.5	116-122
3 HIPS MEASUREMENT	32-34	81-86	35-37	89-94	38-40	96-101	40.5-42	103-107	43-44.5	109-113	45-46.5	114-118	47.5-49	120-124
4 INSEAM	30	76	31	79	32	81	33	84	33	84	33	84	33	84

	28		30		32		34		36		38	
	IN.	CM	IN.	CM	IN.	CM	IN.	CM	IN.	CM	IN.	CM
2 WAIST MEASUREMENT	28.5-29	72.5-74	30.5-31	77.5-79	32.5-33	82.5-84	34.5-35	87.5-89	36.5-37	92.5-94	38.5-39.5	98-100.5
3 HIPS MEASUREMENT	34.5-35	87.5-89	36.5-37	92.5-94	38.5-39	98-99	40.5-41	103-104	42.5-43	108-109	44.5-45.5	113-115.5
4 INSEAM	30	76	31	79	32	81	33	84	33	84	33	84

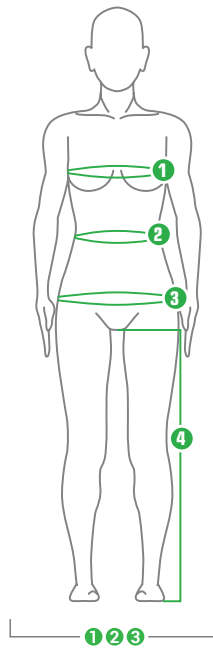


Garment that provides a close to the body fit without compressing.



Roomier fit that provides a casual look and good range of movement.

## WOMEN SIZE CHARTS



Measurements all around

### Slim Fit

	XS		S		M		L		XL		XXL	
	IN.	CM	IN.	CM	IN.	CM	IN.	CM	IN.	CM	IN.	CM
1 CHEST MEASUREMENT	31-33	79-84	33-35	84-89	35-37	89-94	37-39	94-99	39-41	99-104	41-43	104-109
2 WAIST MEASUREMENT	26-27	66-69	27-29	69-74	29-31	74-79	31-33	79-84	33-35	84-89	35-37	89-94
3 HIPS MEASUREMENT	34-36	86-91	36-38	91-96	38-40	96-101	40-42	101-106	42-44	106-111	44-46	111-116
4 INSEAM	29	74	30	76	31	79	32	81	32	81	32	81



Close-fitting garment designed to provide aerodynamics in a cycling position. For a less compressive feel on the body, upsize.

### Standard Fit & Relaxed Fit

	XS		S		M		L		XL		XXL	
	IN.	CM	IN.	CM	IN.	CM	IN.	CM	IN.	CM	IN.	CM
1 CHEST MEASUREMENT	31-33	79-84	33-35	84-89	35-37	89-94	38-40	96-101	41-43	104-109	44-46	111-116
2 WAIST MEASUREMENT	26-27	66-69	27-29	69-74	29-31	74-79	32-34	81-86	35-38	89-96	39-42	99-106
3 HIPS MEASUREMENT	34-36	86-91	36-38	91-96	38-40	96-101	41-43	104-109	44-46	111-116	47-49	119-124
4 INSEAM	29	74	30	76	31	79	32	81	32	81	32	81



Garment that provides a close to the body fit without compressing.



Roomier fit that provides a casual look and good range of movement.

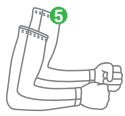
\*The hips are measured at the fullest part of the seat. Measurements are taken wearing a sports bra.

\* These charts are for information purposes only to find the best suitable size. Individuals have respective measurements and preferences. For this reason, these charts cannot guarantee perfect fit.

## JUNIOR SIZE CHART

KIDS AGE	4-6		6-8		8-10		10-12		12-14	
	JRXS		JRS		JRM		JRL		JRXL	
	IN.	CM	IN.	CM	IN.	CM	IN.	CM	IN.	CM
<b>CHEST MEASUREMENT</b>	22 - 24.5	56 - 62	25 - 26.5	63.5 - 67	26.5 - 28.5	67 - 72	28.5 - 29.5	72 - 75	29.5 - 32	75 - 81
<b>WAIST MEASUREMENT</b>	22 - 23.5	56 - 59.5	23.5 - 24.5	59.5 - 62	24.5 - 25.5	62 - 65	25.5 - 26.5	65 - 67	26.5 - 28.5	67 - 72
<b>HIPS MEASUREMENT</b>	23 - 25.5	58 - 65	26 - 27.5	66 - 70	27.5 - 30.5	70 - 77.5	30.5 - 31.5	77.5 - 80	31.5 - 34	80 - 86
<b>INSEAM</b>	17 - 20	43 - 51	20 - 24	51 - 61	24 - 25.5	61 - 65	25.5 - 27.5	65 - 70	27.5 - 30	70 - 76

\* The child's age is for information purposes only. The best way to choose the appropriate size is to measure the child.



5 Measurements all around.

## WARMERS SIZE CHART

	XS		S		M		L		XL		XXL	
	IN.	CM	IN.	CM	IN.	CM	IN.	CM	IN.	CM	IN.	CM
5 <b>BICEPS</b>	10 - 11	25.5 - 28	11 - 12	28 - 30.5	12 - 13	30.5 - 33	13 - 14.5	33 - 36.5	14.5 - 16	36.5 - 40.5	16 - 17.5	40.5 - 44.5
6 <b>THIGH</b>	19.5 - 21	49.5 - 53.5	21 - 22.5	53.5 - 57.5	22.5 - 24	57.5 - 61	24 - 25.5	61 - 65	25.5 - 27	65 - 69	27 - 28.5	69 - 72



6 Measurements all around.

## HATS SIZE CHART



ADULT				JUNIOR
OS				OS
S/M		L/XL		
S	M	L	XL	
20.5 - 22 in.	22 - 23.25 in.	23.25 - 24.5 in.	24.5 - 25.75 in.	20.5 - 22.5 in.
52 - 56 cm	56 - 59 cm	59 - 62 cm	62 - 65 cm	52 - 57.5 cm

1 Measurement all around.





Gloves

# Technologies



## Ergo Air Gloves:

"I created ventilated gloves to lower temperature of the hand (ulnar and median nerves) to eliminate numbness.

The goal: comfort"

-Louis Garneau,  
Cyclist, Founder and President



## X-Vent

X-Vent is a specially designed shape of our patented Ergo Air® ventilation system. The "X" shape of the mesh opening is strategically placed to avoid palm material bunching while improving ventilation and handlebar feel.



## Ergo Air®

The Ergo Air® system efficiently manages moisture for excellent body thermoregulation. When the body sweats, the Ergo Air® system keeps it dry, thus avoiding discomfort caused by excess body heat or increased cold resulting from moisture.

(USA: 6,845,519 / RE42,894 / CAN: 2,419,330)



## Biogel padding

Biogel is our proprietary palm padding material. This material has great damping properties which distribute pressure to provide comfort and protection. The Biogel's properties combined with our patented progressive padding system allow us to use less padding, resulting in better protection and comfort while providing great handlebar feel.



## Progressive padding

The progressive padding is specifically designed to provide optimal protection for long-distance riders. Thicker padding protects the ulnar nerve, which is the most vulnerable in the cycling position, while a greater surface of padding throughout the palm allows pressure to be distributed and dissipates the energy of impacts.

(CAN: 2,683,608)



## Proprietary finger pullers

Our patent-pending proprietary finger pullers design is a pull-off aid. It's an extension of the palm material with a semi-circular peripheral edge at the fingers' ends, friction active spots and an opening in the pull tab which is functionally reliable and seamlessly integrated so you won't notice it while riding.

# Gloves



020 090

1481189 **Mondo Gel** p. 94



020 308 096

1481190 **W's Mondo Gel** p. 94



020 023 563

1481191 **Nimbus Gel** p. 94



020 525 207

1481192 **W's Nimbus Gel** p. 94



020 023 350

1481183 **Air Gel Ultra** p. 95



020 288 117

1481184 **W's Air Gel Ultra** p. 95



760 023 020 448 517v

1481139 **Biogel RX-V** p. 96



356 947 020

1481140 **W's Biogel RX-V** p. 96



159 020 023 760

1481164 **Calory** p. 96



159 020 096 307

1481165 **W's Calory** p. 96



115 096 020 023

1481166 **Calory Jr** p. 97



9SY 9UE 29G 2B2

1481092 **Kid Ride** p. 97



354 020  
1482004 **Ditch** p. 97



020 207  
1482005 **W's Ditch** p. 97



020  
1482307 **Super Prestige 3** p. 98



020 779  
1482273 **Rafale 2** p. 99



020 438  
1482274 **W's Rafale 2** p. 99



020  
1482287 **Biogel Thermo** p. 99



020  
1482288 **W's Biogel Thermo** p. 99



# Gloves

## Mondo Gel

1481189 / S-XXL

- **Upper hand:** Avatar Mesh; lightweight spandex; soft and lightweight microfiber thumb
- **Palm:** GTEX synthetic leather, textured in key areas; patented Ergo Air® X-Vent ventilation<sup>1</sup>; grip-enhancing silicone print
- Patented Biogel<sup>2</sup> progressive padding<sup>3</sup>
- Patent-pending proprietary finger pullers
- Extended seamless slip-on cuff



## W's Mondo Gel

1481190 / S-L

- **Upper hand:** Avatar Mesh; lightweight spandex; soft and lightweight microfiber thumb
- **Palm:** GTEX synthetic leather, textured in key areas; patented Ergo Air® X-Vent ventilation<sup>1</sup>; grip-enhancing silicone print
- Patented Biogel<sup>2</sup> progressive padding<sup>3</sup>
- Patent-pending proprietary finger pullers
- Extended seamless slip-on cuff



## Nimbus Gel

1481191 / S-XXL

- **Upper hand:** AirFit Mesh; lightweight spandex; soft and lightweight microfiber thumb
- **Palm:** GTEX synthetic leather; patented Ergo Air® X-Vent ventilation<sup>1</sup>; strategically-placed silicone print
- Patented Biogel<sup>2</sup> progressive padding<sup>3</sup>
- Patent-pending proprietary finger pullers
- Low profile hook and loop wrist fastener



## W's Nimbus Gel

1481192 / S-L

- **Upper hand:** AirFit Mesh; lightweight spandex; soft and lightweight microfiber thumb
- **Palm:** GTEX synthetic leather; patented Ergo Air® X-Vent ventilation<sup>1</sup>; strategically-placed silicone print
- Patented Biogel<sup>2</sup> progressive padding<sup>3</sup>
- Patent-pending proprietary finger pullers
- Low profile hook and loop wrist fastener





## Air Gel Ultra

1481183 / S-XXL

- **Upper hand:** AirFit Mesh; soft and lightweight microfiber thumb
- **Palm:** GTEX synthetic leather; patented Ergo Air® X-Vent ventilation<sup>1</sup>; strategically-placed silicone print
- Patented Biogel<sup>2</sup> progressive padding<sup>3</sup>
- Patent-pending proprietary finger pullers
- Wrist puller
- Low profile hook and loop wrist fastener



020

023

350

## W's Air Gel Ultra

1481184 / S-L

- **Upper hand:** AirFit Mesh; soft and lightweight microfiber thumb
- **Palm:** GTEX synthetic leather; patented Ergo Air® X-Vent ventilation<sup>1</sup>; strategically-placed silicone print
- Patented Biogel<sup>2</sup> progressive padding<sup>3</sup>
- Patent-pending proprietary finger pullers
- Wrist puller
- Low profile hook and loop wrist fastener



020

288

177

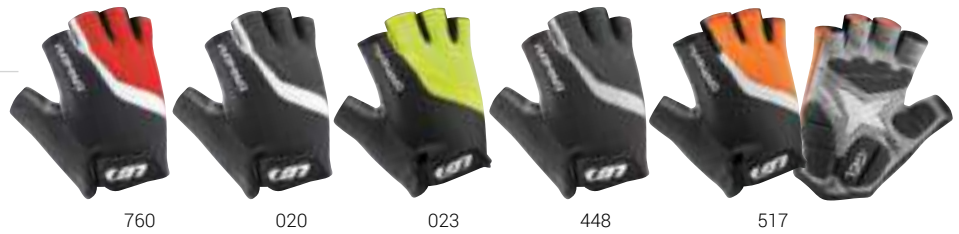
<sup>1</sup> USA: 6,845,519 - CAN: 2,419,330 / <sup>2</sup> Biogel is composed of styrene-butadiene rubber / <sup>3</sup> CAN: 2,683,608

# Gloves

## Biogel RX-V

1481139 / XS-3XL

- **Upper hand:** Power Mesh; spandex; extra soft microfiber thumb
- **Palm:** Perforated leather-like material; patented Ergo Air® X-Vent ventilation<sup>1</sup>
- Biogel<sup>2</sup> padding
- Hook and loop wrist fastener



760

020

023

448

517

## W's Biogel RX-V

1481140 / S-L

- **Upper hand:** Power Mesh; spandex; extra soft microfiber thumb
- **Palm:** Perforated leather-like material; patented Ergo Air® X-Vent ventilation<sup>1</sup>
- Biogel<sup>2</sup> padding
- Hook and loop wrist fastener



356

020

947

## Calory

1481164 / XS-XXL

- **Upper hand:** Spandex; soft microfiber thumb
- **Palm:** Perforated leather-like material; patented Ergo Air® ventilation<sup>1</sup>
- Foam padding
- Patent-pending proprietary finger pullers
- Hook and loop wrist fastener



159

020

023

760

## W's Calory

1481165 / S-L

- **Upper hand:** Spandex; soft microfiber thumb
- **Palm:** Perforated leather-like material; patented Ergo Air® ventilation<sup>1</sup>
- Foam padding
- Patent-pending proprietary finger pullers
- Hook and loop wrist fastener



159

020

096

307

## Jr Calory

1481166 / JRS-JRL

- **Upper hand:** Spandex; soft microfiber thumb
- **Palm:** Perforated leather-like material; patented Ergo Air® ventilation<sup>1</sup>
- Foam padding
- Patent-pending proprietary finger pullers



115

096

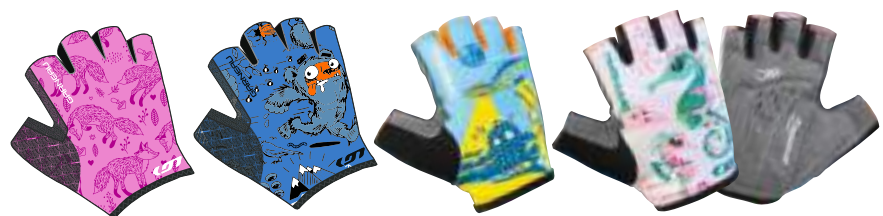
020

023

## Kid Ride

1481092 / 2-4-6

- **Upper hand:** Spandex; soft microfiber thumb
- **Palm:** Perforated leather-like material; patented Ergo Air® ventilation<sup>1</sup>
- Foam padding



9SY

9UE

29G

2B2

## Ditch

1482004 / XS-XXL

- **Upper hand:** Moisture-wicking 4-way stretch breathable mesh; soft and absorbant micro-suede thumb
- **Palm:** Single-layer perforated GTEX synthetic leather palm; one-piece seamless palm construction; strategically-placed silicone print
- Tactile thumb, index and middle finger
- Simple slip-on design



354

020

## W's Ditch

1482005 / S-L

- **Upper hand:** Moisture-wicking 4-way stretch breathable mesh; soft and absorbant micro-suede thumb
- **Palm:** Single-layer perforated GTEX synthetic leather palm; one-piece seamless palm construction; strategically-placed silicone print
- Tactile thumb, index and middle finger
- Simple slip-on design



207

020

<sup>2</sup> Biogel is composed of styrene-butadiene rubber



# Gloves

## Super Prestige 3

1482307 / S-XXL

- **Upper hand:** Thermo-laminated spandex; 40 g 3M Thinsulate™ insulation
- **Palm:** Leather-like material; patented Ergo Air® X-Vent ventilation<sup>1</sup>; 40 g 3M insulation; strategically-placed silicone print; tactile areas
- Microfiber thumb to wipe sweat
- Reflective accents: high visibility
- Patented Biogel<sup>2</sup> progressive padding<sup>3</sup>
- Windproof and water repellent lobster mitts with Teflon® spandex finger cover



020



## Rafale 2

1482273 / S-XXL

- **Upper hand:** Iso Lite WR; extra soft microfiber thumb
- **Palm:** GTEX synthetic leather; patented Ergo Air® X-Vent ventilation<sup>1</sup>; grip-enhancing silicone print
- Tactile thumb, index and middle finger
- Patented Biogel<sup>2</sup> progressive padding<sup>3</sup>
- Wide wrist opening with hook and loop fastener
- Reflective highlights
- Wrist puller



020



779

## W's Rafale 2

1482274 / S-L

- **Upper hand:** Iso Lite WR; extra soft microfiber thumb
- **Palm:** GTEX synthetic leather; patented Ergo Air® X-Vent ventilation<sup>1</sup>; grip-enhancing silicone print
- Tactile thumb, index and middle finger
- Patented Biogel<sup>2</sup> progressive padding<sup>3</sup>
- Wide wrist opening with hook and loop fastener
- Reflective highlights
- Wrist puller



020



438

## Biogel Thermo

1482287 / S-XXL

- **Upper hand:** Drytex® Thermal DWR; extra soft microfiber index and thumb
- **Palm:** GTEX synthetic leather; patented Ergo Air® X-Vent ventilation<sup>1</sup>
- Tactile thumb, index and middle finger
- Patented Biogel<sup>2</sup> progressive padding<sup>3</sup>
- Extended fitted elastic cuff
- Reflective highlights
- Wrist puller



020

## W's Biogel Thermo

1482288 / S-L

- **Upper hand:** Drytex® Thermal DWR; extra soft microfiber index and thumb
- **Palm:** GTEX synthetic leather; patented Ergo Air® X-Vent ventilation<sup>1</sup>
- Tactile thumb, index and middle finger
- Patented Biogel<sup>2</sup> progressive padding<sup>3</sup>
- Extended fitted elastic cuff
- Reflective highlights
- Wrist puller



020

<sup>1</sup> USA: 6,845,519 - CAN: 2,419,330 / <sup>2</sup> Biogel is composed of styrene-butadiene rubber / <sup>3</sup> CAN: 2,683,608



**Helmets**









# technologies

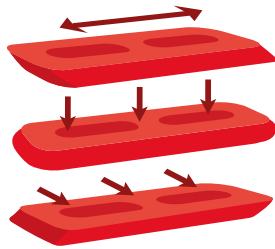


**Rotexx:**

"After my bike crash in 2018, I decided to create safer helmets and used Rotexx, a new rotational technology.

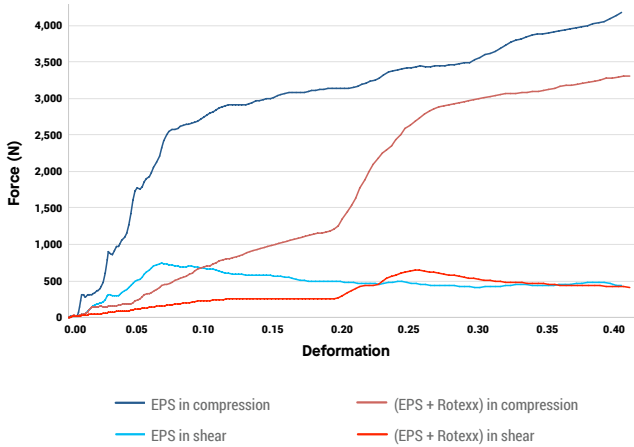
The goal: Safety"

-Louis Garneau,  
Cyclist, Founder and President

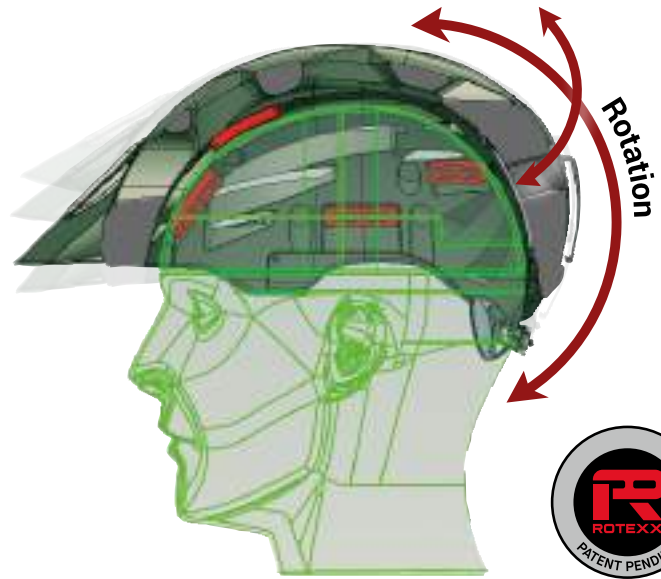


**Compression & shear**

**Strength vs deformation at 48 joules**



## Rotary Damping System (RDS)

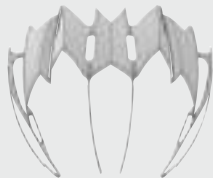


## Rotexx technology

The Rotexx technology pads are a fusion between the search for a specific geometric shape and the composition of a viscoplastic material to offer the user increased protection by reducing the energy transmitted to the head on both the linear level and in rotation.

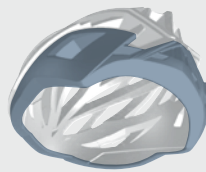
The elaborate composition of the viscoplastic material is a blend between a polyurethane polymer and a non-Newtonian fluid called D-Clan. Because of their flexibility, these pads offer absolute comfort and fit when wearing the helmet, while offering superior resistance to deformation for greater energy absorption upon impact thanks to shear thickening properties.

The very special geometrical shape of a parallelepiped pierced with two oblong-shaped cavities allows deformation and shear in all directions to absorb a portion of the rotation acceleration during an impact.



### Polymer reinforcement

Lightweight composite skeleton that provides structural support and integrity on impact. Its use allows for larger vents, which not only reduce drag but also increase ventilation.  
USA: 9,585,432



### MSB base

Ring-shaped plastic protection at the base of the helmet that reinforces the perimeter for enhanced protection. In addition, the MSB base increases the durability of the helmet by sheltering its structure.  
CAN : 2090347 / USA : 5,351,342



### Spiderlock® helmet stabilizing system

This precise rack-and-pinion mechanism is independent from the strap system and can be easily tightened on the head using only one hand for a perfect fit around the head and to keep the helmet in place. USA: 7,114,197

# helmets



9W1

8V0

8Y1

1405362 P-09 p. 106



5C6

5C7

1408074 Vitesse p. 107



1CF

6Z0

9A9

1405361 Course p. 107



1FW

1CF

1FV

1405275 Equipe p. 108



21H

21G

1405803 Aki II p. 108



1LF

1LE

9D3

1CX

1405666 Raid p. 110



7V9

7V7

7V8

1405813 Loam p. 110



01i

01H

5B8

1405760 Le Tour II p. 111



1CP

7N0

1405563 Majestic p. 111





563 067 023 020

1405907 Eagle II p. 112



8FY 21R 21Q 21T

1405917 W's Tiffany II p. 112



563 019 020

1405927 Astral II p. 113



069 8AL 8AR

1405967 W's Amber II p. 113



8GK 8FZ 21V

1405908 Eddy II p. 114



8GL 8GM 53C

1405918 W's Victoria II p. 114



8AM 8E5 1CD

1405185 Jump p. 115



19W 19V

1405861 Razz p. 115



10Q 1CS 1CR

1405360 Nino p. 116



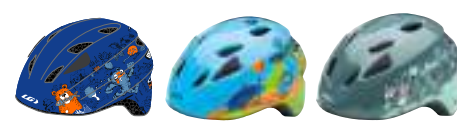
8GN 8G0 8GU 8GV 21M 21L

1405928 Pro Jr II p. 116



9SY 2B1 1JH 1JG

1405204 Piccolo p. 117



8GZ 29G 2AA

1405773 Brat p. 117



# Helmets

## P-09

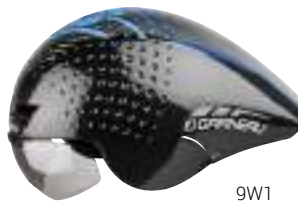
1405362 / S-L

- In-Mold construction, 4 vents, inner evacuation channels. Textured golf ball effect at front. Retractable ears<sup>1</sup>
- Spiderlock® Pro TT
- Pro-Lock divider
- Icefil® padding
- P-09 lens included
- Certifications: CPSC - ASTM
- 12.4 oz/350 g



8Y1

SIZE	S	M	L
INCHES	20½ - 22	22 - 23¼	23¼ - 24½
CM	52 - 56	56 - 59	59 - 62



9W1



8Y0



## P-09 Lens

1405061 / OS

- Designed for installation on the P-09 helmet, it lifts for a fast entry into the helmet



7K8

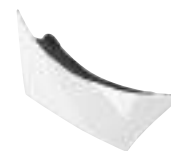


7F7

## P-09 Front Plug

1405363 / OS

- Designed to close the P-09 helmet's front vent



019



020

## Vitesse

1408074 / S-L

- In-Mold construction, 14 vents, inner evacuation channels. Aerodynamic dimple pattern for better air flow. MSB technology
- MIPS Multidirectional Impact Protection System
- Spiderlock® Pro Road
- V-Lock divider
- X-Static® XT2™ padding
- Certifications: CPSC - CEN - ASTM F1447 (cycling); ASTM F1849 (skating)
- 12 oz/340 g



SIZE	S	M	L
INCHES	20½ - 22	22 - 23¼	23¼ - 24½
CM	52 - 56	56 - 59	59 - 62



5C7



5C6

## Course

1405361 / S-L

- In-Mold construction, 31 vents, inner evacuation channels. MSB technology. Aero inner nerve<sup>1</sup>
- Rotexx: patent-pending<sup>1</sup> Rotary Damping System
- Spiderlock® Pro II
- V-Lock divider
- X-Static® XT2™ padding
- Certifications: CPSC - ASTM F1447 - CEN
- 8.8 oz/250 g



SIZE	S	M	L
INCHES	20½ - 22	22 - 23¼	23¼ - 24½
CM	52 - 56	56 - 59	59 - 62



6Z0



1CF



9A9

<sup>1</sup> International patent pending

# Helmets

## Equipe

1405275 / S-L

- In-Mold construction, 33 vents, inner evacuation channels. MSB technology. PC skeleton
- Rotexx: patent-pending<sup>1</sup> Rotary Damping System
- Spiderlock® Duo
- V-Lock divider
- X-Static® XT2™ padding
- Certifications: CPSC - ASTM F1447 - CEN
- 9.2 oz/260 g



SIZE	S	M	L
INCHES	20½ - 22	22 - 23¼	23¼ - 24½
CM	52 - 56	56 - 59	59 - 62



1CF



1FV



1FW

## Aki II

1405803 / S-L

- In-Mold construction, 28 vents, inner evacuation channels. MSB technology
- Rotexx: patent-pending<sup>1</sup> Rotary Damping System
- Spiderlock® Duo
- V-Lock divider
- Airdry® padding
- Certifications: CPSC - ASTM F1447 - CEN
- 8.9 oz/252 g



SIZE	S	M	L
INCHES	20½ - 22	22 - 23¼	23¼ - 24½
CM	52 - 56	56 - 59	59 - 62



21H  
fluo



21G





# Helmets

## Raid

1405666 / S-L

- In-Mold construction, 14 vents, inner evacuation channels. MSB technology
- Rotexx: patent-pending<sup>1</sup> Rotary Damping System
- Spiderlock® Pro MTB<sup>1</sup>
- Tri-Glide Pro divider
- X-Static® XT2™ padding
- Certifications: CPSC - ASTM F1447 - CEN
- 10.6 oz/300 g



SIZE	S	M	L
INCHES	20½ - 22	22 - 23¼	23¼ - 24½
CM	52 - 56	56 - 59	59 - 62



9D3



1LE

1CX

1LF

## Loam

1405813 / S-L

- In-Mold construction, 28 vents, inner evacuation channels. MSB technology
- Rotexx: patent-pending<sup>1</sup> Rotary Damping System
- Spiderlock® Duo
- V-Lock divider
- Airdry® padding
- Certifications: CPSC - ASTM F1447 - CEN
- 8.9 oz/252 g



SIZE	S	M	L
INCHES	20½ - 22	22 - 23¼	23¼ - 24½
CM	52 - 56	56 - 59	59 - 62



7V9



7V7

7V8

## Le Tour II

1405760 / S/M-M/L

- In-Mold construction, 19 vents, inner evacuation channels. Ringlock frame ring
- Rotexx: patent-pending<sup>1</sup> Rotary Damping System
- Spiderlock® Solo IV
- Steplock divider
- Airdry® padding
- Certifications: CPSC - ASTM F1447 - CEN
- 9.7 oz/275 g



SIZE	S/M	M/L
INCHES	20 <sup>3</sup> / <sub>4</sub> - 22 <sup>1</sup> / <sub>2</sub>	21 <sup>3</sup> / <sub>4</sub> - 24
CM	53 - 57	55 - 61



01H



01i



5B8

## Majestic

1405563 / XL

- In-Mold construction, 20 vents, inner evacuation channels
- Rotexx: patent-pending<sup>1</sup> Rotary Damping System
- Spiderlock® Solo IV
- Steplock divider
- Airdry® padding
- Certifications: CPSC - ASTM F1447 - CEN
- 10.6 oz/300 g



SIZE	XL
INCHES	23 <sup>3</sup> / <sub>4</sub> - 25 <sup>1</sup> / <sub>4</sub>
CM	60 - 64



7N0



1CP

<sup>1</sup> International patent pending

# Helmets

## Eagle II

1405907 / UA - Universal Adult

- In-Mold construction, 20 vents, inner evacuation channels
- Rotexx: patent-pending<sup>1</sup> Rotary Damping System
- Spiderlock® Solo IV
- V-Lock divider
- Airdry® padding
- Certifications: CPSC - ASTM F1447 - CEN
- 9.3 oz/264 g



SIZE	UA
INCHES	21 ¼ - 24
CM	54 - 61



563



023 fluo



020



067

## W's Tiffany II

1405917 / UW - Universal Women

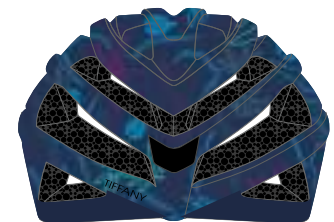
- In-Mold construction, 20 vents, inner evacuation channels
- Rotexx: patent-pending<sup>1</sup> Rotary Damping System
- Spiderlock® Solo IV
- V-Lock divider
- Airdry® padding
- Certifications: CPSC - ASTM F1447 - CEN
- 8.9 oz/252 g



SIZE	UW
INCHES	20 ½ - 22 ½
CM	52 - 57



8FY



21T fluo



21R



21Q

## Astral II

1405927 / UA - Universal Adult

- In-Mold construction, 20 vents, inner evacuation channels
- Rotexx: patent-pending<sup>1</sup> Rotary Damping System
- Spiderlock® Solo IV
- V-Lock divider
- Airdry® padding
- Certifications: CPSC - ASTM F1447 - CEN
- 9.3 oz/264 g



SIZE	UA
INCHES	21¼ - 24
CM	54 - 61



563



019



020

## W's Amber II

1405967 / UW - Universal Women

- In-Mold construction, 20 vents, inner evacuation channels
- Rotexx: patent-pending<sup>1</sup> Rotary Damping System
- Spiderlock® Solo IV
- V-Lock divider
- Airdry® padding
- Certifications: CPSC - ASTM F1447 - CEN
- 8.9 oz/252 g



SIZE	UW
INCHES	20½ - 22½
CM	52 - 57



089



8AR



8AL

<sup>1</sup> International patent pending



# Helmets

## Eddy II

1405908 / UA - Universal Adult

- In-Mold construction, 17 vents, inner evacuation channels
- Rotexx: patent-pending<sup>1</sup> Rotary Damping System
- Spiderlock® UNO
- V-Lock divider
- Airdry® padding
- Certifications: CPSC - ASTM F1447 - CEN
- 10.6 oz/300 g



SIZE	UA
INCHES	21¼ - 24
CM	54 - 61



8GK



8FZ



21V

## W's Victoria II

1405918 / UW - Universal Women

- In-Mold construction, 17 vents, inner evacuation channels
- Rotexx: patent-pending<sup>1</sup> Rotary Damping System
- Spiderlock® UNO
- V-Lock divider
- Airdry® padding
- Certifications: CPSC - ASTM F1447 - CEN
- 10 oz/285 g



SIZE	UW
INCHES	20½ - 22½
CM	52 - 57



8GL



8GM



53C

**Jump** / UY - Universal Youth  
1405185 / UC - Universal Child

- In-Mold construction, 14 vents, inner evacuation channels
- Rotexx: patent-pending<sup>1</sup> Rotary Damping System
- Spiderlock® Solo IV
- Steplock divider
- Airdry® padding
- Certifications: CPSC - ASTM F1447 - CEN
- 10 oz/285 g



SIZE	UY	UC
INCHES	20¾ - 22½	20 - 21¾
CM	53 - 57	51 - 55



1CD



8E5



8AM

1CD

**Razz**  
1405861 / UY - Universal Youth

- In-Mold construction, 20 vents, inner evacuation channels
- Rotexx: patent-pending<sup>1</sup> Rotary Damping System
- Spiderlock® Solo IV
- Steplock divider
- Airdry® padding
- Certifications: CPSC - ASTM F1447 - CEN
- 9.5 oz/270 g



SIZE	UY
INCHES	20¾ - 22½
CM	53 - 57



19W



19V

<sup>1</sup> International patent pending

# Helmets

## Nino

1405360 / UC - Universal Child

- In-Mold construction, 20 vents, inner evacuation channels
- Rotexx: patent-pending<sup>1</sup> Rotary Damping System
- Spiderlock® Solo IV
- Steplock divider
- Airdry® padding
- Certifications: CPSC - ASTM F1447 - CEN
- 9 oz/255 g



SIZE	UC
INCHES	19 3/4 - 21 3/4
CM	50 - 55



1CQ



1CR



1CS

## Pro Jr II

1405928 / UY - Universal Youth

- In-Mold construction, 17 vents, inner evacuation channels
- Rotexx: patent-pending<sup>1</sup> Rotary Damping System
- Spiderlock® UNO
- V-Lock divider
- Airdry® padding
- Certifications: CPSC - ASTM F1447 - CEN
- 10 oz/285 g



SIZE	UY
INCHES	20 1/2 - 22 1/2
CM	52 - 57



8GN



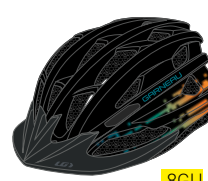
21M



21L



8G0



8GU



8GV

**Piccolo** / UY - Universal Youth  
1405204 / UC - Universal Child

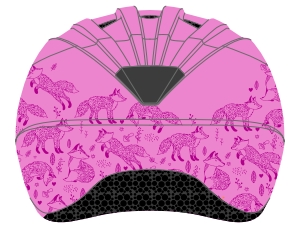
- In-Mold construction, 11 vents, inner evacuation channels
- Rotexx: patent-pending<sup>1</sup> Rotary Damping System
- Spiderlock® Solo IV
- Steplock divider
- X-Static® XT2™ padding
- Bug net
- Certifications: CPSC
- 8.8 oz/250 g



SIZE	UY	UC
INCHES	20½ - 21¾	18 - 20
CM	52 - 55	46 - 51



9SY



2B1



1JH



1JG

**Brat**  
1405773 / UC - Universal Child

- Bonded construction, 10 vents. Extended rear coverage
- Rotexx: patent-pending<sup>1</sup> Rotary Damping System
- Spiderlock® Solo IV
- Steplock divider
- Airdry® padding
- Bug net
- Certifications: CPSC - ASTM F1447 - CEN
- 9 oz/255 g



SIZE	UC
INCHES	19 - 21¾
CM	48 - 55



8GZ



2AA



29G

<sup>1</sup> International patent pending



# Spiderlock

## Spiderlock® Pro TT

1405066 / OS

- Compatible with the P-09 helmet



STD

## Spiderlock® Pro Road

1405091 / S/M-M/L

- Compatible with the Vitesse helmet



STD

## Spiderlock® Pro II

1405069 / OS

- Compatible with the Course helmet



STD

## Spiderlock® Pro MTB

1405003 / S/M-M/L

- Compatible with the Raid and Raid MIPS helmets



STD

## Spiderlock® Duo

1405102 / OS

- Compatible with the Equipe, Aki II, Kaido and Loam helmets



STD

# Visors

## Raid Visor

1405072 / OS

- Specifically designed for the Raid helmet



STD

## 1803 Visor

1405103 / OS

- Specifically designed for the Loam helmet



STD

## Le Tour Visor

1405070 / OS

- Specifically designed for the Le Tour and Le Tour II helmets



STD

## 1907 Visor

1405107 / OS

- Specifically designed for the Eagle II (L), Tiffany II (L), Astral II (L) and Amber II (L) helmets



STD

## VX Visor

1405065 / S-L

- Specifically designed for the Tiffany (L), Eagle (L), Majestic (L), Astral (L), Razz (L) and Nino (S) helmets



STD

## 1908 Visor

1405108 / OS

- Specifically designed for the Eddy II, Victoria II, and Pro Junior II helmets



STD

## Jump Visor

1405092 / OS

- Specifically designed for the Jump helmet



STD



Shoes

# Technologies

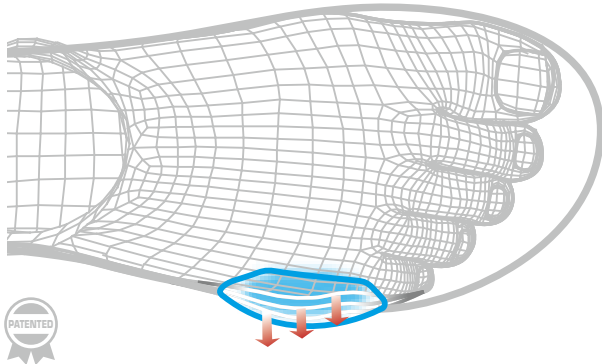


## X-Comfort Zone:

"I created a new bio-mechanic system for shoes. When the cyclist pedals, 26 foot bones, 16 joints, 107 ligaments and 20 muscles move. The bio-mechanic system gives the foot room and eliminates numbness.

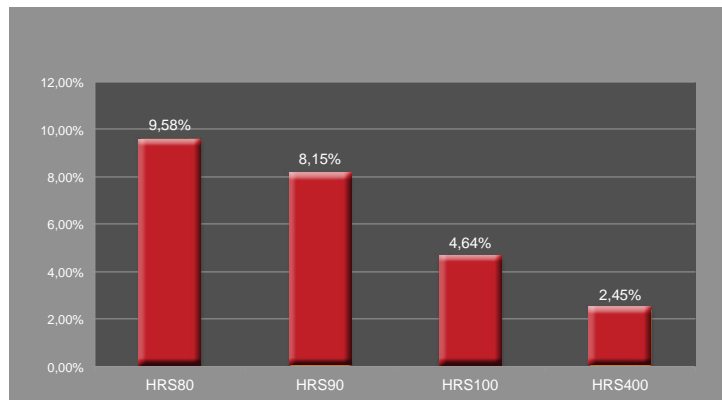
The goal: Comfort "

-Louis Garneau,  
Cyclist, Founder and President



## X-Comfort zone

The X-Comfort Zone is an expandable zone that stretches up to 5 mm to provide comfort and to prevent numbness during long rides. In addition, the X-Comfort allows shoes to fit two different foot widths, from "C" to "E" (North American sizing). (CAN: 2.951.452)



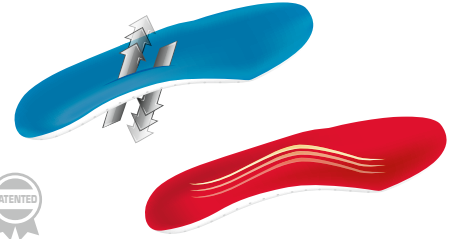
## HRS (HEEL RETENTION SYSTEM)

- HRS-80 single-layer for good heel stability
- HRS-90 with 0.4 mm membrane stabilizes heel
- HRS-100 with 0.6 mm membrane and anti-slip reduces power loss
- HRS-400 reinforced with engineering polymer and anti-slip reduces power loss

## Ergo Air Shoes:

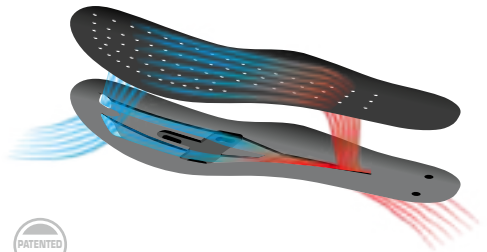
"I created shoes with vented soles to increase airflow, assist blood circulation and eliminate cramps.

The goal: Comfort"



## Ergo Air® insoles

The Cool Stuff and Hot Stuff insole built around our Ergo Air® system that provides through-and-through ventilation to ride in any conditions. (USA: 7,707,750)



## Air channel system

Designed to provide excellent toe-to-heel airflow. Prevents overheating during hot rides. (USA: 7,533,475)



## Power zone

The Power Zone is a non-stretchable laminated section of the upper that allows for better transfer of energy when pedaling. It also prevents the shoes from tightening during the ride, when the fabric softens and becomes too tight, thus creating numbness.



# Shoes



936 020 019

**1487319** Course Air Lite XZ p. 124



020 260 283

**1487285** Carbon LS-100 III p. 125



020 277

**1487286** W's Carbon LS-100 III p. 125



936 020 019

**1487315** Platinum XZ p. 126



019 020

**1487314** W's Ruby XZ p. 126



019 020

**1487321** Copal BOA p. 126



775 020 1LS

**1487297** Chrome II p. 127



020 019

**1487298** W's Jade II p. 127



1LS

**1487289** Tri Air Lite p. 128



019 306

**1487299** Tri X-Lite III p. 129



019

**1487300** W's Tri X-Lite III p. 129



019 569

**1487301** Tri X-Speed IV p. 130



752 581

**1487302** W's Tri X-Speed IV p. 130



1487303 **Baryum** p. 131



1487317 **Granite XC** p. 131



1487316 **W's Granite XC** p. 132



1487323 **Hillbilli** p. 132



1487305 **Gravel II** p. 133



1487304 **W's Sapphire II** p. 133



1487294 **Multi Fly** p. 134



1487307 **Multi Air Flex II** p. 135



1487306 **W's Multi Air Flex II** p. 135



1487277 **Urban** p. 135



1487278 **W's Urban** p. 135



## Course Air Lite XZ

1487319 NEW / 38-48/40.5-46.5

- RACER FIT for snug upper
- Bounded upper all seamless for comfort to prevent pressure points
- Integrated double X-Comfort Zone<sup>1</sup> for large range of feet width
- BOA Li2, new mechanism generates higher power with finer resolution
- PowerZone Technology for better ankle support and stability
- Lace system with 4 independent adjustment zone to maximized comfort during long rides
- 100% Carbon sole with Patented Air Chanel<sup>2</sup> for constant Air flow to prevent fatigue and numbness
- 3D insoles<sup>3</sup> with 3 adjustable arches for custom fit
- 7.9 oz/225 g (size 42)



019



936

020



## Carbon LS-100 III

1487285 / 38-50/41.5-46.5

- RACER FIT
- X-Comfort Zone<sup>1</sup> and Power Zone technologies
- Boa® IP1-S two-way micro-adjustment
- Patented Carbon Composite outsole<sup>2</sup>
- COOLMAX® insole
- HRS-100
- 8.3 oz/235 g (size 42)



260



020



283

## W's Carbon LS-100 III

1487286 / 36-43/38.5-41.5

- RACER FIT
- X-Comfort Zone<sup>1</sup> and Power Zone technologies
- Boa® IP1-S two-way micro-adjustment
- Patented Carbon Composite outsole<sup>2</sup>
- COOLMAX® insole
- HRS-100
- 7.2 oz/205 g (size 38)



020



277

<sup>1</sup> X-Comfort Zone CAN 2,951,452 / <sup>2</sup> Air channel USA 7,533,475

\*COOLMAX® is a trademark of INVISTA



# Shoes

## Platinum XZ

1487315 NEW / 38-50

- COMFORT FIT
- Bounder upper all seamless for comfort to prevent pressure points
- New BOA Li2 micro adjustment
- Integrated X-Comfort Zone<sup>1</sup> for large range of feet width
- Power Zone technology for better ankle support and stability to prevent adjustment
- New Carbon Injected/ nylon outsole with constant ventilation to reduce fatigue and numbness
- Arch support improved for better support
- Ventilated insoles for constant air flow
- Reflective highlights
- 8.9 oz/252 g (size 42)



936



020



019

## W's Ruby XZ

1487314 NEW / 36-43

- COMFORT FIT
- Bounder upper all seamless for comfort to prevent pressure points
- New BOA Li2 micro adjustment
- Integrated X-Comfort Zone<sup>1</sup> for large range of feet width
- Power Zone technology for better ankle support and stability to prevent adjustment
- New Carbon Injected/ nylon outsole with constant ventilation to reduce fatigue and numbness
- Arch support improved for better support
- Ventilated insoles for constant air flow
- Reflective highlights
- 7.8 oz/220 g (size 38)



019



020

## Copal BOA

1487321 NEW / 38-50

- COMFORT FIT
- Bounder upper all seamless for comfort to prevent pressure points
- BOA L6 micro adjustment
- Integrated X-Comfort Zone<sup>1</sup> for large range of feet width
- New Ergo Air Stream outsole, Fiberglass injected / nylon outsole with constant ventilation to reduce fatigue and numbness
- Higher arch support for better support
- Ventilated insoles for constant air flow
- Reflective heel cup for safety
- 8.9 oz/254 g (size 42)



020



019

## Chrome II

1487297 / 38-50

- COMFORT FIT
- X-Comfort Zone<sup>1</sup> technology
- Synthetic leather
- 3 offset hook-and-loop straps
- Patented injected fiberglass/nylon outsole<sup>2</sup>
- Breathable and ventilated insole
- HRS-80
- 9.7 oz/274 g (size 42)



1LS



020

## W's Jade II

1487298 / 36-43

- COMFORT FIT
- X-Comfort Zone<sup>1</sup> technology
- Synthetic leather
- 3 offset hook-and-loop straps
- Patented injected fiberglass/nylon outsole<sup>2</sup>
- Breathable and ventilated insole
- HRS-80
- 8.3 oz/236 g (size 38)



019



020

<sup>1</sup> X-Comfort Zone CAN 2,951,452 / <sup>2</sup> Air channel USA 7,533,475



## Tri Air Lite

1487289 / 38-48/40.5-46.5

- RACER FIT
- Dual X-Comfort Zone<sup>1</sup> and Power Zone technologies
- Boa® L6 micro-adjustment and reversed hook-and-loop strap
- Patented Carbon Air Lite extremely ventilated outsole<sup>2</sup>
- Ventilated IceFil Transfo 3D insole with 3 adjustable arches
- HRS-100
- Shoe bag included
- 8.3 oz/235 g (size 42)



1LS



## Tri X-Lite III

1487299 / 38-50/41.5-46.5

- RACER FIT
- X-Comfort Zone<sup>1</sup> technology
- Double hook-and-loop straps
- Patented Carbon Composite outsole<sup>2</sup>
- COOLMAX<sup>®</sup> insole
- HRS-100
- 8.8 oz/250 g (size 42)



306

## W's Tri X-Lite III

1487300 / 36-43/38.5-41.5

- RACER FIT
- X-Comfort Zone<sup>1</sup> technology
- Double hook-and-loop straps
- Patented Carbon Composite outsole<sup>2</sup>
- COOLMAX<sup>®</sup> insole
- HRS-100
- 7.7 oz/219 g (size 38)



019

<sup>1</sup> X-Comfort Zone CAN 2,951,452 / <sup>2</sup> Air channel USA 7,533,475

\*COOLMAX<sup>®</sup> is a trademark of INVISTA



# Shoes

## Tri X-Speed IV

1487301 / 38-50

- COMFORT FIT
- X-Comfort Zone<sup>1</sup> technology
- Double hook-and-loop straps
- Patented injected fiberglass/nylon outsole<sup>2</sup>
- Breathable and ventilated insole
- HRS-80
- 8.8 oz/250 g (size 42)



569



019

## W's Tri X-Speed IV

1487302 / 36-43

- COMFORT FIT
- X-Comfort Zone<sup>1</sup> technology
- Double hook-and-loop straps
- Patented injected fiberglass/nylon outsole<sup>2</sup>
- Breathable and ventilated insole
- HRS-80
- 8.4 oz/238 g (size 38)



752



581

## Baryum

1487303 / 38-48/41.5-46.5

- RACER PRO FIT
- X-Comfort Zone<sup>1</sup> and Power Zone technologies
- Boa® L6 micro-adjustment
- Carbon and rubber outsole
- Transfo 3D insole with 3 adjustable arches
- HRS-100
- 12.7 oz/360 g (size 42)



1LT



020

## Granite XC

1487317 NEW / 38-50

- COMFORT FIT
- Bounder upper all seamless for comfort to prevent pressure points
- New BOA Li2 micro adjustment
- Integrated X-Comfort Zone<sup>1</sup> for large range of feet width
- Power Zone technology for better ankle support and stability to prevent adjustment
- Carbon injected / nylon outsole Ergo Grip 2 with improved traction on rocks
- Removable studs for better traction in hard condition
- EVA insoles for better shock absorption
- 12 oz/340 g (size 42)



944



020

<sup>1</sup> X-Comfort Zone CAN 2.951.452

# Shoes

## W's Granite XC

1487316 NEW / 36-43

- COMFORT FIT
- Bounder upper all seamless for comfort to prevent pressure points
- BOA L6 micro adjustment
- Integrated X-Comfort Zone<sup>1</sup> for large range of feet width
- Power Zone technology for better ankle support and stability to prevent adjustment
- Carbon injected / nylon outsole Ergo Grip 2 with improved traction on rocks
- Removable studs for better traction in hard condition
- EVA insoles for better shock absorption
- 10.2 oz/290 g (size 38)



020

## Hillibilli

1487323 NEW / 38-50

- COMFORT FIT
- Bounder upper all seamless for comfort to prevent pressure points
- BOA L6 micro adjustment
- Integrated X-Comfort Zone<sup>1</sup> for large range of feet width
- Ergo Grip II outsole, Fiberglass injected / nylon outsole with durable crampons
- 11.2 oz/318 g (size 42)



391



020

## Gravel II

1487305 / 38-50

- COMFORT FIT
- X-Comfort Zone<sup>1</sup> technology
- 3 offset hook-and-loop straps
- T-FLEX rubber outsole with fiberglass/nylon
- Regular EVA insole
- 12.9 oz/365 g (size 42)



## W's Sapphire II

1487304 / 36-43

- COMFORT FIT
- X-Comfort Zone<sup>1</sup> technology
- 3 offset hook-and-loop straps
- T-FLEX rubber outsole with fiberglass/nylon
- Regular EVA insole
- 11.4 oz/324 g (size 38)



<sup>1</sup> X-Comfort Zone CAN 2.951.452





## Multi Fly

1487294 / 36-48

- COMFORT FIT
- Integrated X-Comfort Zone<sup>1</sup> technology
- One-piece knitted upper
- Reflective laces
- T-FLEX rubber outsole
- Regular EVA insole
- 14 oz/398 g (size 42)



020



308

## Multi Air Flex II

1487307 / 38-48

- COMFORT FIT
- Integrated X-Comfort Zone<sup>1</sup> technology
- 3 offset hook-and-loop straps
- Multi Air Flex nylon/fiberglass outsole
- Breathable and ventilated insole
- 10.4 oz/296 g (size 42)



090



020

## W's Multi Air Flex II

1487306 / 36-43

- COMFORT FIT
- Integrated X-Comfort Zone<sup>1</sup> technology
- 3 offset hook-and-loop straps
- Multi Air Flex nylon/fiberglass outsole
- Breathable and ventilated insole
- 8.8 oz/250 g (size 38)



308



090



020

<sup>1</sup> X-Comfort Zone CAN 2.951.452

# Shoes

## Urban

1487277 / 38-48

- COMFORT FIT
- Reflective laces
- T-FLEX rubber outsole
- Regular EVA insole
- 13.4 oz/380 g (size 42)



308



090

## W's Urban

1487278 / 36-43

- COMFORT FIT
- Reflective laces
- T-FLEX rubber outsole
- Regular EVA insole
- 10.4 oz/295 g (size 38)



533



376

# Shoe accessories

## Transfo 3D Insole

1487255 / 36-50

- Low/Med/High adapted arch profile
- Ergo Air® ventilation
- Patent-pending anchoring system



067

## SPD Adaptor

1487264 / OS

- 2 anti-slip platforms and 6 screws (4 x 17 mm)
- Fit on all combined SPD and road outsoles
- Convenient for stability and walking and easy to clip on



020

## LG Cleats

1487284 / OS

- SPD cleats
- 4 screws (12 mm)
- 4 mm hexagonal head
- 1.7 oz/50 g (pair)

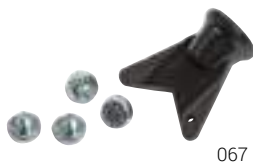


020

## LG Studs

1487204 / OS

- 5 pieces
- 8 mm studs
- For all MTB shoes



067

## Replacement Bumpers

1487229 / 36-40/41-44/45-48

- 4 bumpers and 4 screws
- For Carbon Air Lite outsole



020

## C-Road Bumpers

1487313 NEW / 36-39/40-42/43-45/46-48

- 4 bumpers and 4 screws
- For Carbon Air Lite outsole



020

## Boa® L6 Dial Replacement Kit

1487310 / LEFT - RIGHT

- 2 pieces / 1 shoe
- Reference styles: 1487289 / 1487293 / 1487303 / 1487314 / 1487315 / 1487316 / 1487317 / 1487321 / 1487323



020

## Boa® IP1-S Dial Replacement Kit

1487262 / LEFT - RIGHT

- 2 pieces / 1 shoe
- 70 cm lace
- Reference styles: 1487256 / 1487257 / 1487263 / 1487105 / 1487272 / 1487275 / 1487276 / 1487273 / 1487274



020

019

## Boa® IP1 Dial Replacement Kit

1487223 / LEFT - RIGHT

- 4 pieces / 1 shoe
- Reference style: 1487181



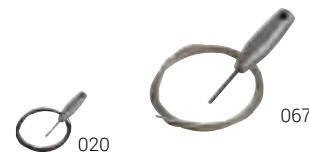
019

020

## Lace Replacement Kit

1487197 / OS

- 2 pieces / 1 shoe
- 70 cm lace
- For all shoes with Boa®



020

067

## LG Ratchet Tongue

1487203 / OS

- 2 pieces
- 93 mm



019

020

## Regular Ratchet Set

1487200 / OS

- 2 pieces



020

019





**Shoe covers**

## Thermal H<sub>2</sub>O

1083173 / S-XL

- Seam-sealed 3 mm super stretch neoprene laminated with fleece
- Rubber sole with cutting guide for cleats
- Seam-sealed zipper for all weather conditions
- Reflective highlights
- Recommended for road shoes
- 6,3 oz/178 g (medium)



020

## Thermal Pro

1083168 / S-XL

- Seam-sealed 2 mm neoprene laminated with fleece
- Rubber sole with cutting guide for cleats
- Wide side hook-and-loop fastener with puller
- Reflective highlights
- Recommended for road shoes
- 5.4 oz/154 g (medium)



020

## Thermax II

1083165 / S-XL

- Seam-sealed 3 mm super stretch neoprene laminated with fleece
- Reinforced rubber under opening with hook-and-loop strap
- Hook-and-loop fastener with safety puller
- Reflective highlights
- Recommended for MTB and road shoes
- 4.10 oz/116 g (medium)



020

## Neo Protect III

1083167 / S-XXL

- Seam-sealed 2 mm neoprene laminated with spandex
- Neoprene under opening reinforced with Hypalon
- Wide side hook-and-loop fastener with puller
- Reflective highlights
- Recommended for MTB and road shoes
- 2.5 oz/72 g (medium)



020

# Shoe covers

## Toe Thermal II

1083178 / S/M-L/XL

- **ENERFLOW**
- Woven strap
- 3 mm anti-slip neoprene
- Reflective highlights
- Recommended for road shoes
- 1.98 oz/56 g (small/medium)



020

## H<sub>2</sub>O II

1083164 / S-XL

- **ISO LITE WR fleece**
- Seam-sealed
- Neoprene cuff
- 2 openings with textured neoprene and reinforced rubber
- Sealed zipper with protector
- Reflective highlights
- Recommended for road shoes
- 2.4 oz/69 g (medium)



020





## Socks

### Conti Long

1085058 / S/M-L/XL

- 51% COOLMAX® fiber / 23% nylon / 20% polyester / 6% LYCRA® fiber
- Ultra-breathable mesh and high-flex cuff
- Anatomic arch support
- Durable, reinforced heel and toes
- LG Long: 7"/18 cm



### Conti

1085057 / S/M-L/XL

- 51% COOLMAX® fiber / 23% nylon / 20% polyester / 6% LYCRA® fiber
- Ultra-breathable mesh and high-flex cuff
- Anatomic arch support
- Durable, reinforced heel and toes
- LG Mid: 4"/10 cm





# Socks

## Mid Versis (3-Pack)

1085054 / S/M-L/XL

- 50% COOLPLUS® polyester / 30% polypropylene / 15% nylon / 5% LYCRA® fiber
- Breathable mesh and high-flex cuff
- Stretch arch support
- Durable, reinforced heel and toes
- LG Mid: 4"/10 cm



## Ribz

1085082 / S/M-L/XL

- 47% nylon / 37% COOLMAX® fiber / 11% polyester / 5% LYCRA® fiber
- Highly breathable mesh and ribbed cuff
- Cushioned and reinforced heel, under foot and toes
- Reflective detailing
- LG X-Long: 8"/20 cm



## Merino 60

1086078 / S/M-L/XL

- 60% merino wool / 18% nylon / 16% polyester / 6% LYCRA® fiber
- Slightly compressive double-layered cuff
- Breathable mesh zone on upper foot
- Anatomic arch support
- Durable, reinforced heel and toes
- LG Long: 7"/18 cm

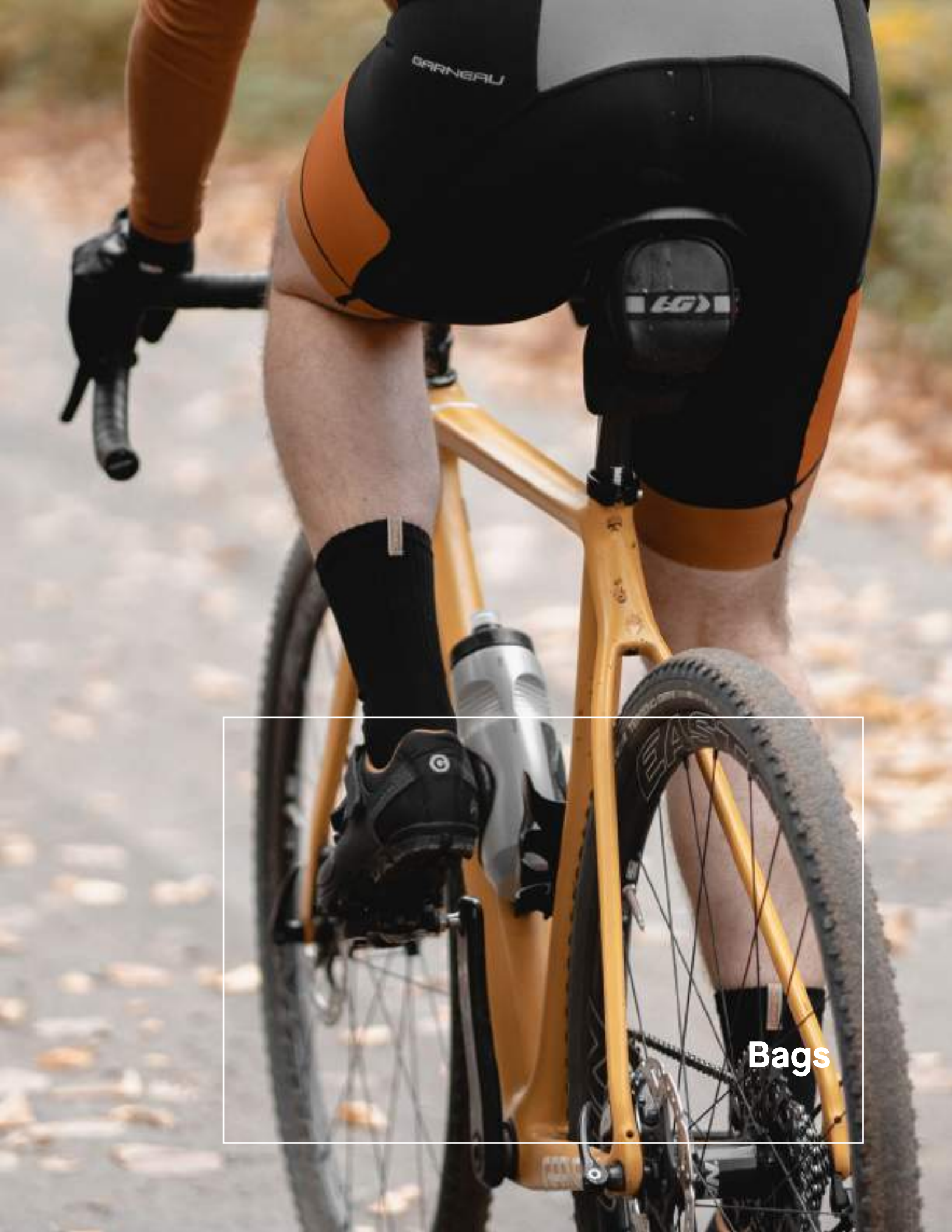


## W's Merino 60

1086084 / S/M-L/XL

- 60% merino wool / 18% nylon / 16% polyester / 6% LYCRA® fiber
- Slightly compressive double-layered cuff
- Breathable mesh zone on upper foot
- Anatomic arch support
- Durable, reinforced heel and toes
- LG Long: 7"/18 cm





BARNEAU

EG

Bags

# Bags

## Groad Seat

1493578 NEW / OS

- Saddle Dry bag
- Nylon/ Hypalon for extreme durability
- Cinch straps around saddle bag to stabilized
- Roll bag opening with buckles for easy opening and access
- Wide hook-and-loop straps for seat post
- Compression air valve
- All seam sealed to be 100% waterproof
- Reflective elements for safety
- 7 L / 220 X 460 X 35mm



020

## Groad Handle

1493581 NEW / OS

- Handle bar Dry bag made to fit on flat handle bar
- Nylon/ Hypalon for extreme durability
- 2 hook-and-loop straps to stabilized around handlebar
- Double Roll bag opening with buckles for easy opening and storage
- Compression air valve
- All seam sealed to stay dry
- Reflective elements for safety
- 7 L / 180 X 390mm



020

## Groad Frame

1493582 NEW / OS

- Dry under top tube bag
- Nylon/ Hypalon for extreme durability
- 3 Adjustable Hook-and-loop to fix on bike frame
- Seam sealed zipper with garage to prevent infiltration
- All seam sealed to stay dry
- Reflective elements for safety
- 2 L / 360 X 130 X 55mm



020

## Groad Top

1493583 NEW / OS

- Dry top tube bag
- Nylon/ Hypalon for extreme durability
- 3 adjustable Hook-and-loop to fix on bike frame
- Seam sealed zipper with garage to prevent infiltration
- All seam sealed to stay dry
- Reflective elements for safety
- 1 L / 230 X 110 X 55mm



020

## Groad Saddle

1493710 NEW / OS

- Dry saddle bag
- Nylon/ Hypalon for extreme durability
- Wide adjustable Hook-and-loop straps to fix on saddle rails
- Seam sealed zipper with garage to prevent infiltration
- All seam sealed to stay dry
- Reflective elements for safety
- 0.5 L / 150 X 80 X 55mm



020

## Groad Pouch

1493715 NEW / OS

- Saddle bag for stamp water resistant
- Nylon/ Hypalon for extreme durability
- Fixed with 3 Hook-and-loop straps
- Drawstring elastic with buckles to secure inside gear
- Insulated with foam for stability and protection
- Reflective elements for safety
- 0.5 L / 90 X 180mm



020



# Bags

## Zone

1493268 / OS

- Adjustable hook-and-loop straps
- Reflective highlights
- Rear light loop
- Garneau red interior
- 0.75 L/45 CU



020

## Zone Mega

1493269 / OS

- Adjustable hook-and-loop straps
- Reflective highlights
- Rear light loop
- Garneau red interior
- Zippered expandable compartment
- 1.3 L/79 CU



020

## Zone Spark 1.0

1493560 **NEW** / OS

- Adjustable hook-and-loop straps
- Double position main straps to fit any saddle rails position
- PU reinforced to protect bag against abrasion
- Water resistant zips with lock zipper slider to prevent opening while riding
- Rear and side reflective fabric for hi visibility
- 1 L/61 CU



020

## Zone Spark 0.75

1493577 **NEW** / OS

- Adjustable hook-and-loop straps
- Double position main straps to fit any saddle rails position
- PU reinforced to protect bag against abrasion
- Water resistant zips with lock zipper slider to prevent opening while riding
- Rear and side reflective fabric for hi visibility
- 0.75 L/45 CU



020

## Dashboard

1493172 / OS

- Three adjustable hook-and-loop straps
- Micro-adjustable rail system
- Touchscreen smartphone/GPS padded compartment
- Magnetic lid closure
- Reflective highlights
- 1.1 L/67 CU



020

## City Frame 3L

1493521 / OS

- Hook-and-loop straps fastening system
- Zippered main opening
- One zippered side pocket with key hook
- Garneau red interior
- Expandable compartment with elastic loops for bottle
- Cable port; Reflective highlights
- 3 L/180 CU



020

## Top Zone

1493070 / OS

- Adjustable hook-and-loop straps
- Main opening with zip
- Two side pockets
- Garneau red interior
- Cable port
- 1.1 L/67 CU



020

# Bags

## City Pannier 40L

1493271 / OS

- Bungee and hook fastening system
- Front hook-and-loop fastener
- Main opening with zip
- Top carrying handle
- 40 L/2.440 CU



020

## City Pannier 16L

1493270 / OS

- Bungee and hook fastening system
- Front hook-and-loop fastener
- Main opening with zip
- Top carrying handle
- 16 L/976 CU



020

## City Pannier 12L

1493066 / OS

- Bungee and hook fastening system
- Front hook-and-loop fastener
- Main opening with zip
- Top carrying handle
- 12 L/730 CU



020

## City Trunk 16L

1493264 / OS

- Hook-and-loop straps
- Insulated and expandable zippered main compartment
- Drop down integrated side panniers
- Adjustable top mesh flap
- Detachable shoulder strap
- 16 L/976 CU



020



**Bike accessories  
and nutrition**



# Accessories

## Ultra Gel Comfort

1493479 / OS

- Pressure relief, vibration and shock damping design
- Biogel padding system and central channel
- Steel rails with dual damping system
- Reflective highlights
- 25.5 oz/720 g
- 170 x 260 mm



020

## W's Ultra Gel Comfort

1493480 / OS

- Pressure relief, vibration and shock damping women-specific design
- Biogel padding system and central channel
- Steel rails with dual damping system
- Reflective highlights
- 26.1 oz/740 g
- 220 x 255 mm



020

## Gel Comfort

1493483 / OS

- Pressure relief and vibration-eliminating design
- Biogel padding system and central channel
- Steel rails
- Reflective highlights
- 14.5 oz/410 g
- 174 x 270 mm



020

## W's Gel Comfort

1493484 / OS

- Pressure relief and vibration-eliminating women-specific design
- Biogel padding system and central channel
- Steel rails
- Reflective highlights
- 14.6 oz/415 g
- 185 x 255 mm



020

## Ergo Gel

1493293 / OS

- Pressure relief and dual-density design
- Water-repellent spandex
- Biogel padding system and central channel
- Pull cord and spring lock fastener
- Reflective highlights
- 6.70 oz/190 g
- 195 x 270 mm



020

## Spiderlock® Vision

1493963 / OS

- 2 lumens
- Steady, flashing or cyclic modes
- All modes designed to create a great 'SEE ME' light
- Installs anywhere, long life
- Long-lasting CR2032 batteries included
- IPX8 weatherproofness



STD

## Security Combo Light

1493339 / OS

- Front light: one super bright white LED, 8 lumens
- Rear light: one super bright red LED, 3 lumens
- Versatile and easy to use rubber straps
- IPx4 waterproofness
- Long-lasting CR2032 batteries included
- Runtime: 100 hrs steady mode/120 hrs flashing mode



STD

## High Security Combo Light

1493486 / OS

- Front light: 4 super bright white LEDs, 10 to 20 lumens
- Rear light: 4 super bright red LEDs, 3 to 6 lumens
- USB-rechargeable lithium-polymer battery, full charge in 3 hours
- Versatile and easy to use rubber straps
- IPx4 waterproofness; charging and low battery indicator
- Runtime: 4-8 hrs steady mode/8 hrs flashing mode



020

# Accessories

## Lux Rear Light

1493104 / OS

- Big bar of 16 LEDs in a rain-resistant package
- 65-lumen rear red light
- USB-rechargeable lithium-polymer battery, full charge in 2 hours
- Front and side spills ensure a 270-degree 'SEE ME' feature
- Vertical or horizontal mount
- 2 types of brackets for all installation needs



STD

## Lux Front Light

1493103 / OS

- Big bar of 16 LEDs in a rain-resistant package
- 130-lumen front white light
- USB-rechargeable lithium-polymer battery, full charge in 2 hours
- Front and side spills ensure a 270-degree 'SEE ME' feature
- Vertical or horizontal mount
- 2 types of brackets for all installation needs



STD

## Shark

1493341 / OS

- CREE XM-L LED
- 450 lumens
- USB-rechargeable lithium battery, full charge in 3 hours
- Rugged rubber band and 360° notch rotation clip
- IP44 waterproof design
- Charging and low battery indicator



STD

## HiViz360 Bike Reflectors

1493474 / OS

- Set of adhesive labels of various sizes to apply on frame, fork, handlebar, seatpost, crankset, pedals and wheels
- Highly reflective
- Light and heavy duty
- Made in Canada



STD

## Safeguard Elite

1493154 / OS

- **Length:** 69 cm/27"
- **Materials:** 4 mm ABS-coated iron bars linked with stainless steel rivets
- **Lock:** D-cylinder locking mechanism with Bump Lock technology
- Carrying sleeve for on-bike storage
- Two coded keys included
- **Travel weight:** 17.6 oz/500 g



Carrying sleeve

020

## Safeguard Combi 12

1493897 / OS

- **Length:** 180 cm/71"
- **Materials:** Nylon sheathed steel braided cable, 12 mm in diameter
- **Lock:** Number code easy to reprogram as often as needed
- **On-bike storage:** Coils up cleverly when clipped to the frame for riding
- **Travel weight:** 19.4 oz/550 g



020



# Accessories

## Air Elite

1493107 / OS

- 160 psi max pressure
- 90 mm/3.5" oversized gauge
- Auto select head
- Steel base and barrel
- Extra-long hose
- Inflation needles



350

## Air Fondo

1493108 / OS

- 160 psi max pressure
- 90 mm/3.5" oversized gauge
- Auto select head
- Steel barrel
- Long hose
- Inflation needles



350

## Air Mini

1493109 / OS

- 120 psi max pressure
- Aluminum barrel
- Tri-valve head
- T-handle
- Hi-Pressure/Hi-Volume modes



350

## Ultralight Inflator II

1493707 / OS

- Automatic Presta/Schrader valve
- Simple reliable design made of CNC aluminum
- Control over debit with simple reliable push valve
- Two 16 g threaded cartridges included
- One foam sleeve included
- **Inflator weight:** 0.7 oz/19.6 g



STD

## CO<sub>2</sub> Cartridges

1493505 / OS

- This is the quality cartridge you expect in a 16 g size
- Small threaded cartridges are more useful for all bike needs, pack better in gear, and are a wiser gear to carry!
- 20 cartridges per box



STD

## Rouleur Pro

1493150 / OS

- Wireless cyclocomputer
- 21 functions; speed, distance and time
- Fitness, thermometer and second bike functions
- Bikes 1 & 2; freeze frame memory
- Maintenance program
- Auto start/stop, auto scan mode, auto power off
- EL backlight



020

## Rouleur Fondo

1493151 / OS

- Wireless cyclocomputer
- 12 functions
- Speed, distance and time
- Auto start/stop, auto scan mode, auto power off



020

## Dasher

1493404 / OS

- Bicycle smartphone mount
- Robust and stable one-piece silicone design
- Textured flat surface keeps smartphone firmly in place
- Vibration damping design
- Rugged silicone strap
- Fits 4" to 6" smartphones



020

# Accessories

## Fusion

1493122 / OS

---

- 3D shaped alloy die cut
- Friction dimples
- Polymer friction pad design
- Hardware included
- 1.06 oz/30 g



342



019

## Fusion Elite

1493152 / OS

---

- Polycarbonate bottle cage
- Friction dimples
- Hardware included
- 1.2 oz/34 g



019



342

## Oblique

1493097 / OS

---

- Aluminum material
- Side entry ideal for tight frame geometries like many Fatbikes
- Easy and simple modification of the configuration to get a left or right side entry as you prefer
- Hardware included
- 1.76 oz/50 g



STD

## Neo 750

1493179 / OS (24 bottles)

- BPA-free ultra-flexible HET resin bottle
- Odorless, lightweight and dishwasher-safe
- High volume flow with soft silicone valve
- Ergonomic shape for easy grab and squeeze
- Sold in boxes of 24 units
- 750 ml/25.4 oz



306

020

## Neo 600

1493178 / OS (24 bottles)

- BPA-free ultra-flexible HET resin bottle
- Odorless, lightweight and dishwasher-safe
- High volume flow with soft silicone valve
- Ergonomic shape for easy grab and squeeze
- Sold in boxes of 24 unit
- 600 ml/20.3 oz



306

020

## Bidon (600 ml)

1493314 / OS (24 bottles)

- BPA-free and dishwasher-safe flexible resin bottle
- Geometry designed for easy grip and bottle cage insertion
- Soft valve for easy opening
- Sold in boxes of 24 units of assorted colors (000-090-117)
- 600 ml/20.3 oz



000

090

117

AST



# Nutrition

## LG1 Sports Drink

1198202 / 1 canister (910 g)

- A balanced formula with low amounts of simple sugars and complex carbohydrates
- Great-tasting due to its smart mix of quality ingredients
- Created from Louis Garneau's desire to offer a high-electrolyte replenishing formula in an all-natural recipe
- Easy to assimilate and appreciate



G08 / Lime



G07 / Orange



G09 / Punch

## Coffee Louis Garneau

1098001 6 pack 454 g

- **ARABICA COFFEE**
- Coffee (Coffea Arabica) as we know it mainly comes from two distinct varieties: Robusta and Arabica, the latter being widely recognized as the best and the most popular among coffee enthusiasts. The Arabica variety, originally stemming from Africa, is now mainly cultivated in South America (85% of the world coffee production, with 55% produced by Brazil and Colombia alone). Gourmet coffees are practically exclusively made of one variety of Arabica or another, like this coffee, a blend of grains from South and Central America.
- \$1.00 will be donated to the DON'T TEXT AND DRIVE initiative for each product sold.



STD



## Maple syrup – BIO 100% pure

1 bottle (250 ml)

- Product from my land
- Collected by pail and cooked on wood fire
- \$1.00 will be donated to the DON'T TEXT AND DRIVE initiative for each product sold.



STD

## Honey – BIO 100% pure

2 X 85 g package

- Product from my land
- \$1.00 will be donated to the DON'T TEXT AND DRIVE initiative for each product sold.



STD







**Eyewear**

## Deny Kit

1490218 / OS

- Grilamid TR-90 nylon frame
- 3 interchangeable vented lenses: smoke/yellow/clear
- Adjustable polymer nose bridge and polymer inserts in stems
- RX adaptor
- Medium-Large



07Y

## Protector Kit

1490151 / OS

- Grilamid TR-90 nylon frame
- 3 interchangeable protection graded lenses: smoke/orange/clear; comply with EN 16615/21 CFR 801.401 regulations
- Adjustable polymer nose bridge and polymer inserts in stems
- RX adaptor
- Medium-Large



1W4

## Litewall

1490228 / OS

- Grilamid TR-90 nylon frame
- Vented 4/6 base curve PC toric lens
- Adjustable polymer nose bridge and stems
- Polymer inserts in stems
- Medium-Large



019



020

## The Wall II

1490229 / OS

- Grilamid TR-90 nylon frame
- Vented 4/6 base curve PC toric lens
- Adjustable polymer nose bridge and stems
- Polymer inserts in stems
- Medium-Large



019



020





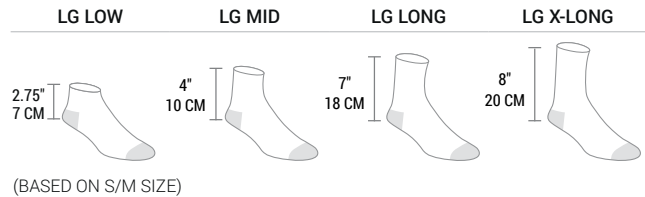
## GLOVES

ADULT SIZES	SIZES (INCHES)	
	PALM CIRCUMFERENCE	
	MEN	WOMEN
XS	6 - 7	-
S	7 - 8	6 - 7
M	8 - 9	7 - 8
L	9 - 10	8 - 9
XL	10 - 11	-
XXL	11 - 12	-
3XL	12 - 13	-

JUNIOR SIZES	SIZES (INCHES)	
	CHILD'S AGE	PALM CIRCUMFERENCE
	JRS	6 - 7
JRM	8 - 9	5 <sup>1</sup> / <sub>2</sub> - 5 <sup>3</sup> / <sub>4</sub>
JRL	10 - 11	5 <sup>3</sup> / <sub>4</sub> - 6
JRXL	12 - 13	6 - 6 <sup>1</sup> / <sub>4</sub>

KID SIZES	SIZES (INCHES)	
	CHILD'S AGE	PALM CIRCUMFERENCE
	2	1 - 2
4	3 - 4	4 <sup>3</sup> / <sub>4</sub> - 5
6	5 - 6	5 - 5 <sup>1</sup> / <sub>4</sub>

## SOCKS



SOCK SIZE	UNISEX SIZING CHART		
	SHOE SIZE		
	LOUIS GARNEAU	MEN	WOMEN
S/M	5-9	6-9	36-41
L/XL	9-13	9-11	42-47

SOCK SIZE	WOMEN SIZING CHART	
	SHOE SIZE	
	LOUIS GARNEAU	WOMEN
S/M	5-8	35-40
L/XL	8-12	40-44

## HOW TO FIND YOUR SHOE SIZE



Place your heel along a wall and place an object (wooden block, dictionary, etc.) against your longest toe.



Measure the distance between the wall and the object. Measure both feet. The longest measure is the size to use.

The Garneau Standard Fit is C. If your foot is larger than standard (D fit and over), we recommend choosing a half-size larger than the size suggested on the chart. If you are purchasing shoes to wear mainly in fall/winter with thicker socks, we recommend measuring your feet with the socks you'll be wearing with the shoes.

### SIZING CHART

SIZING CHART				MEASUREMENT OF YOUR FOOT
LG (EURO)	US MEN	US WOMEN	UK	CM
34	3	5	2	22.1
35	3.5	5.5	2.5	22.4
36	4	6	3	22.7
37	4.5	6.5	3.5	23
38	5	7	4	23.6
38.5	5.5	7.5	4.5	23.9
39	6	8	5	24.2
39.5	6.5	8.5	5.5	24.5
40	7	9	6	24.8
40.5	7.5	9.5	6.5	25.1
41	8	10	7	25.4
41.5	8.5	10.5	7.5	25.7
42	9	11	8	26
42.5	9.25	11.25	8.25	26.3
43	9.5	11.5	8.5	26.6
43.5	9.75	-	8.75	26.9
44	10	-	9	27.2
44.5	10.5	-	9.5	27.5
45	10.75	-	9.75	27.8
45.5	11	-	10	28.1
46	11.5	-	10.5	28.4
46.5	11.75	-	10.75	28.7
47	12	-	11	29
48	12.5	-	11.5	29.3
49	13	-	12	29.9
50	13.5	-	12.5	30.2

### SHOES



**RACER FIT**  
Close to the foot for increased sensation and power transfer.

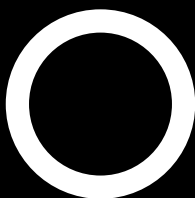


**COMFORT FIT**  
Great performance without compromising comfort.

### SHOE COVERS

#### SIZING CHART

SHOE COVER SIZE	SHOE SIZE
XS	36 - 37 - 38
S	39 - 40 - 40.5 - 41
M	41.5 - 42 - 42.5 - 43
L	43.5 - 44 - 44.5 - 45
XL	45.5 - 46 - 47
XXL	48 - 49 - 50
S/M	36 - 43
L/XL	44 - 50



**DON'T TEXT & DRIVE**

**LOUIS GARNEAU SPORTS LG5.0 INC.**  
30 des Grands-Lacs Street  
St-Augustin-de-Desmaures  
Quebec, Canada, G3A 2E6  
**Phone:** 418 878-4135 or 800 463-8356  
**Fax:** 418 878-4335 or 800 463-5131

**LOUIS GARNEAU U.S.A. INC.**  
3916 US Route 5, P.O. Box 1460  
Derby, VT 05829 USA  
**Phone:** 802 334-5885 or 800 448-1984  
**Fax:** 802 334-6425 or 800 448-1985

**GARNEAU MÉXICO, S.R.L. DE C.V.**  
Calle 20 N° 280 Int. H5 X 21 Y 27  
Ciudad Industrial, C.P. 97288  
Mérida, Yucatán, México  
**Phone:** 01 800 890 56 30

**LOUIS GARNEAU** products are distributed in the following countries:

**AUSTRALIA**  
RHA Imports  
614 319 13301  
[www.rhaimports.com.au](http://www.rhaimports.com.au)

**BRAZIL**  
Silva Mattos & Cia Ltda  
55 11 4792-2780  
[www.aswrracing.com.br](http://www.aswrracing.com.br)

**COLOMBIA**  
Disandina  
57 4 444 2404  
[www.disandina.com](http://www.disandina.com)

**COSTA RICA and PANAMA**  
Decavisa S.A.  
506 2443 3665  
[www.decavisa.com](http://www.decavisa.com)

**FRANCE**  
Cycle Lab  
+33 5 62 07 73 51  
<http://www.cyclelab.eu/>

**GERMANY**  
Bergfreunde  
49 7121 7012 153  
[www.bergfreunde.de](http://www.bergfreunde.de)

**Bike24**  
49 (0) 351 / 417 497  
[www.bike24.com](http://www.bike24.com)

**ICELAND**  
Tri EHF  
354 544 4210  
[www.tri.is](http://www.tri.is)

**ITALY**  
Nutralife Srl  
39 051 593 994  
[www.nutralife.it](http://www.nutralife.it)

**JAPAN and CHINA**  
Aki Corporation  
81 6 6995 7880  
[www.louisgarneausports.com](http://www.louisgarneausports.com)

**NEW ZEALAND**  
Allsports Distribution Limited  
+64 7 377 1033  
<http://www.allsports.co.nz>

**RUSSIA**  
Velocenter LTD  
7 499 123 0460  
[www.velo.rv](http://www.velo.rv)

**SOUTH AFRICA**  
Fit Sports Laboratories  
27 11 963-3325  
[www.fitsportslab.com](http://www.fitsportslab.com)

**SPAIN**  
Tamalpais, S.L.  
34 915 516 558  
<http://www.tamalpais.es>

**LOUIS GARNEAU** products are also available in the following countries:

ARGENTINA  
ARUBA  
BERMUDA  
BOLIVIA  
CHILE  
CZECH REPUBLIC  
DENMARK  
DOMINICAN REPUBLIC  
ECUADOR  
EL SALVADOR  
GUATEMALA

HONDURAS  
JAMAICA  
NETHERLANDS  
NICARAGUA  
PARAGUAY  
PERU  
POLAND  
PORTUGAL  
PUERTO RICO  
SLOVAKIA  
ST MAARTEN

SWEDEN  
TAIWAN  
THAILAND  
TRINIDAD & TOBAGO  
UKRAINE  
UNITED ARAB EMIRATES  
UNITED KINGDOM  
VENEZUELA

[www.garneau.com](http://www.garneau.com)

**GARNEAU®**